
Installing and using the SAN Volume Controller Information Center

This document describes how to install and use the Information Center and the PDFs that the SAN Volume Controller web installation program creates on your hard drive.

Click on the web installation program for SAN Volume Controller to open a download panel.



SAN Volume Controller 6.1.0 IC

Recommended Installation for Your Platform:

Download Installer for Windows...

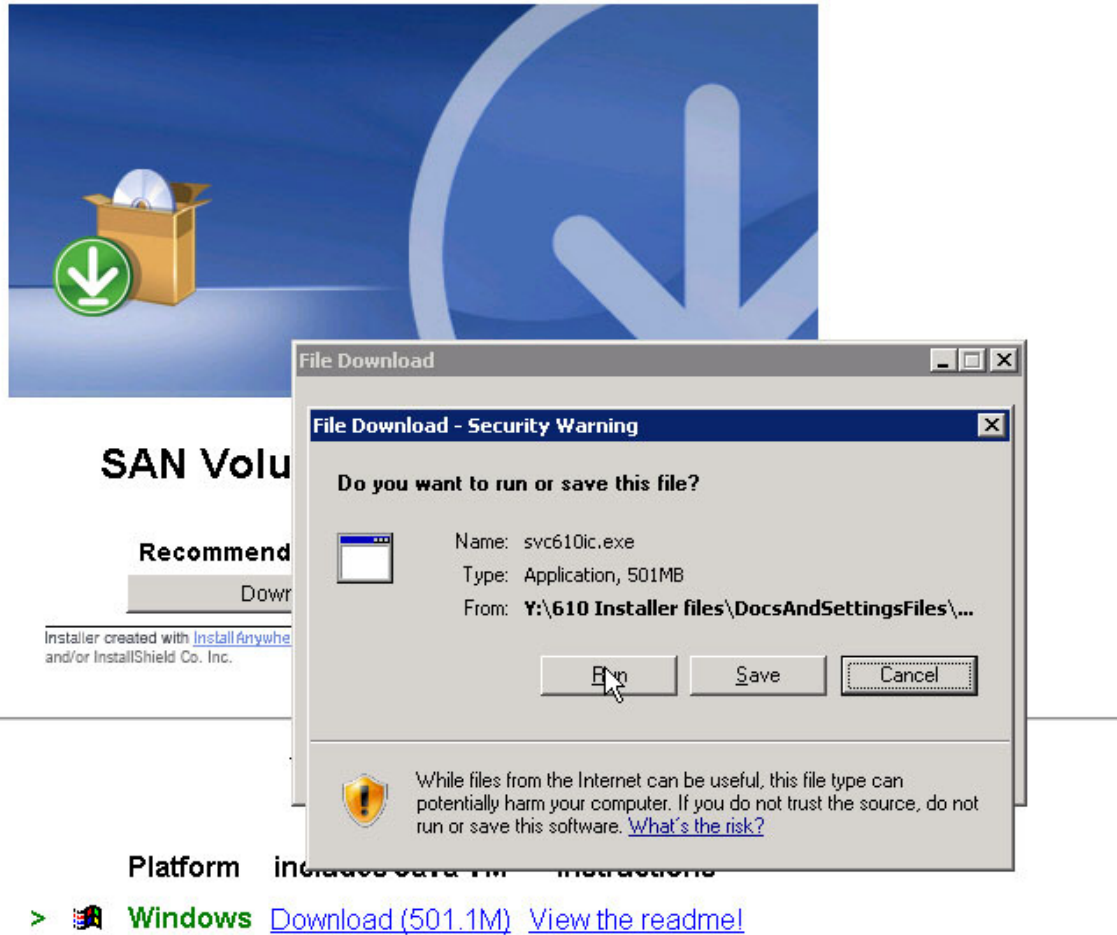
Installer created with [InstallAnywhere](#). Copyright © 1997-2008 Flexera Software Inc. and/or InstallShield Co. Inc.

Available Installers

Platform	includes Java VM	Instructions
----------	------------------	--------------

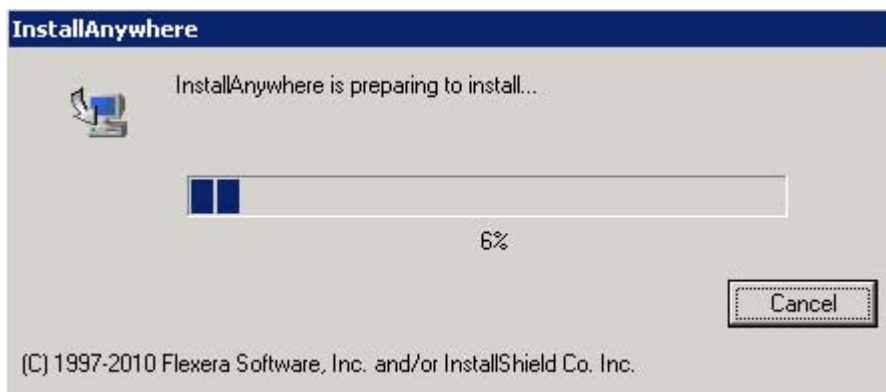
>  Windows	Download (501.1M)	View the readme!
--	-----------------------------------	----------------------------------

You might have to locate the panel if it opens behind your other windows.



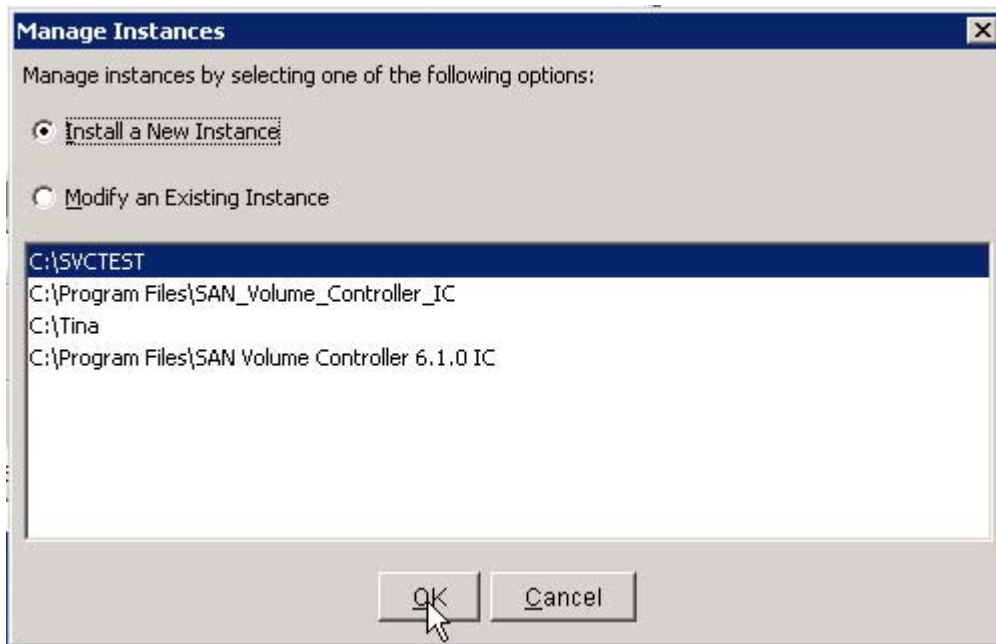
Tip for Mozilla users: You will likely have to download the file and then click it in the download list that Mozilla maintains, to continue the rest of the installation. Internet Explorer provides the Run option, but still waits for the file to download before initiating the rest of the installation.

You can save the code, or click **Run** to get started installing the SAN Volume Controller Information Center. After verifying the publisher, a download panel is displayed.



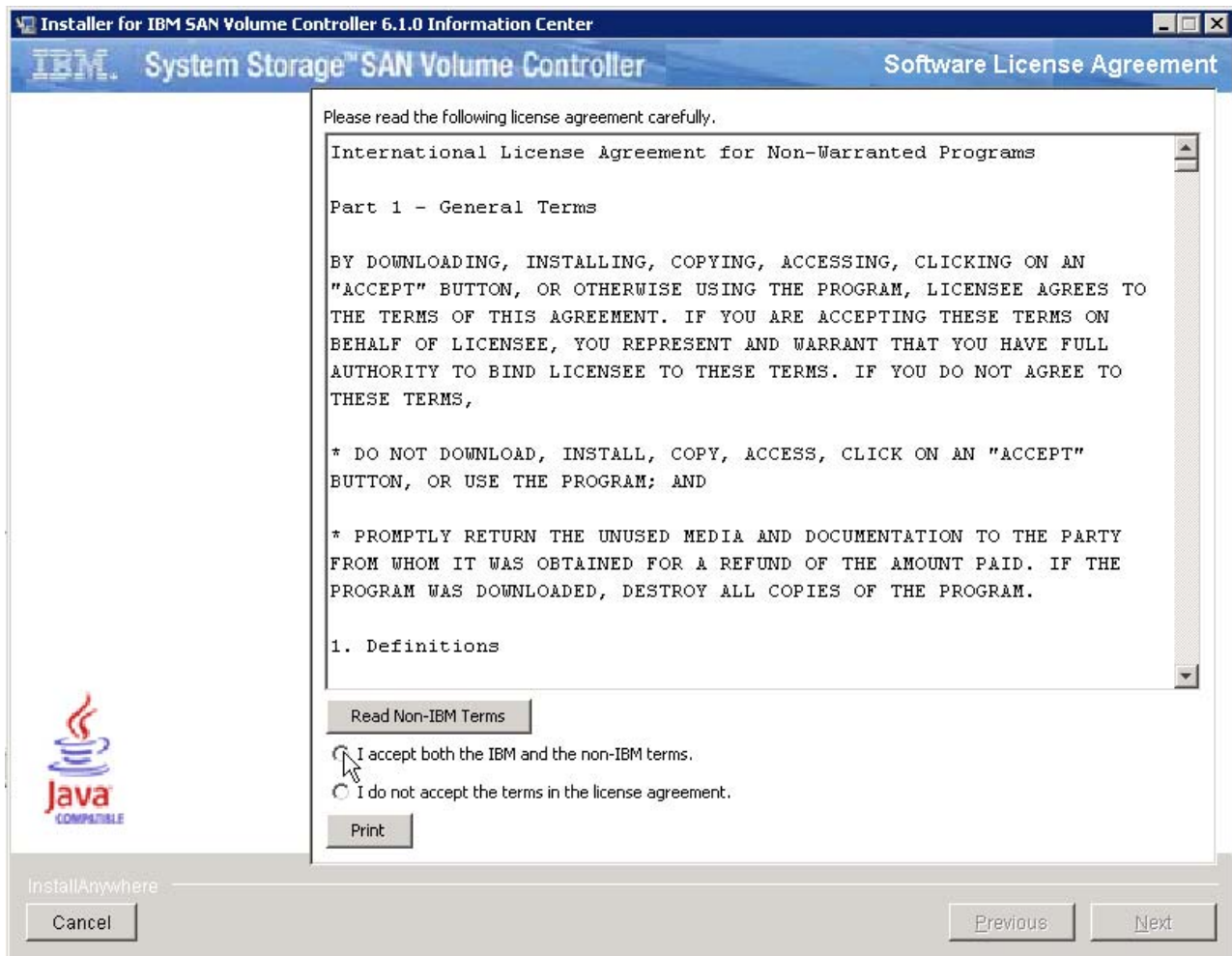
After downloading the code, which is approximately 500 MB of data mainly for the IBM User Interface Help System built on Eclipse 3.4.3, a panel is displayed for you to manage the installation instance. Click

Install a new instance.

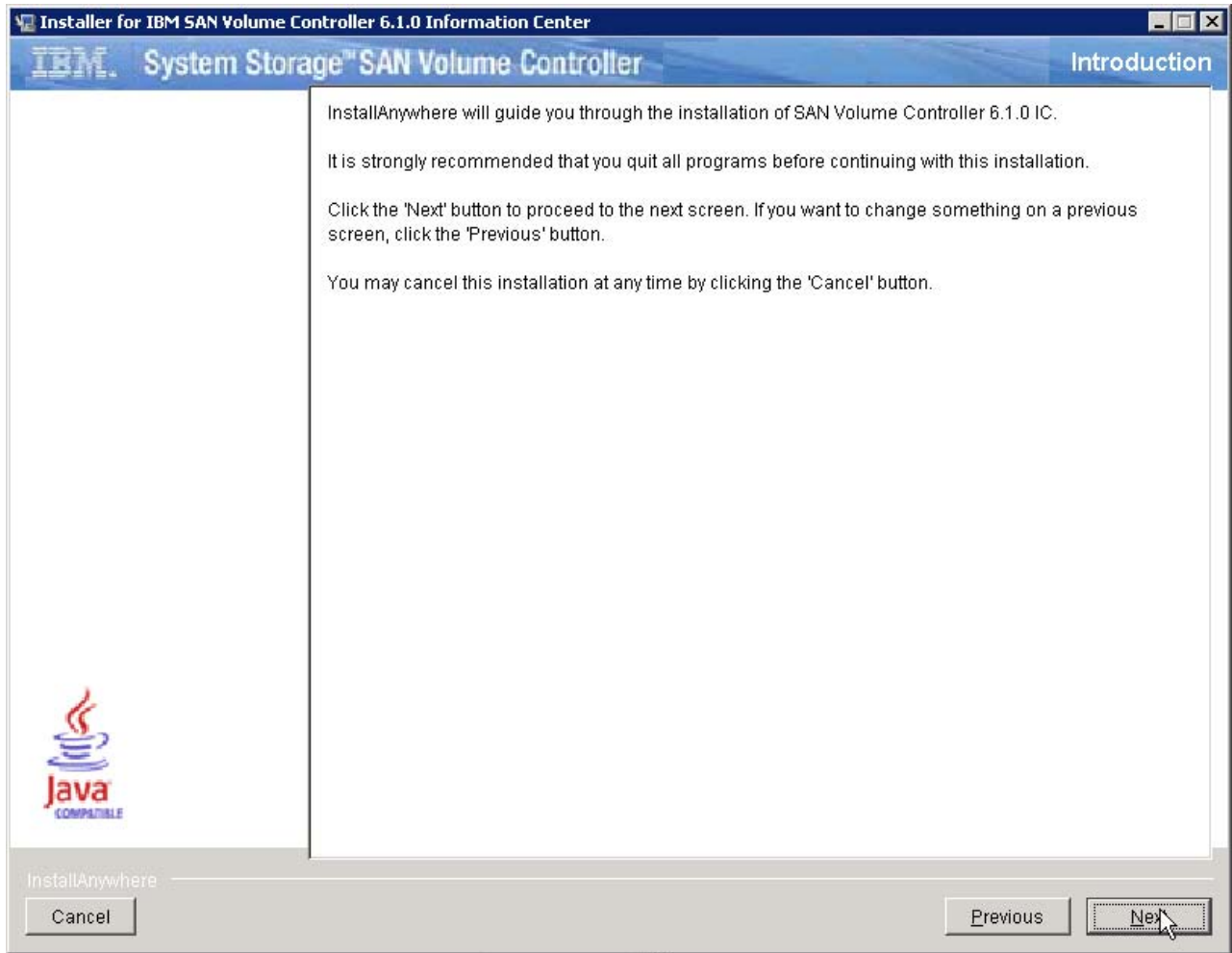


The default installation directory is the C:\Program Files\SVC 6.1.0 IC directory. This document refers to the disk drive and directory where you choose to install the Information Center as the *installation_root_directory* in some examples.

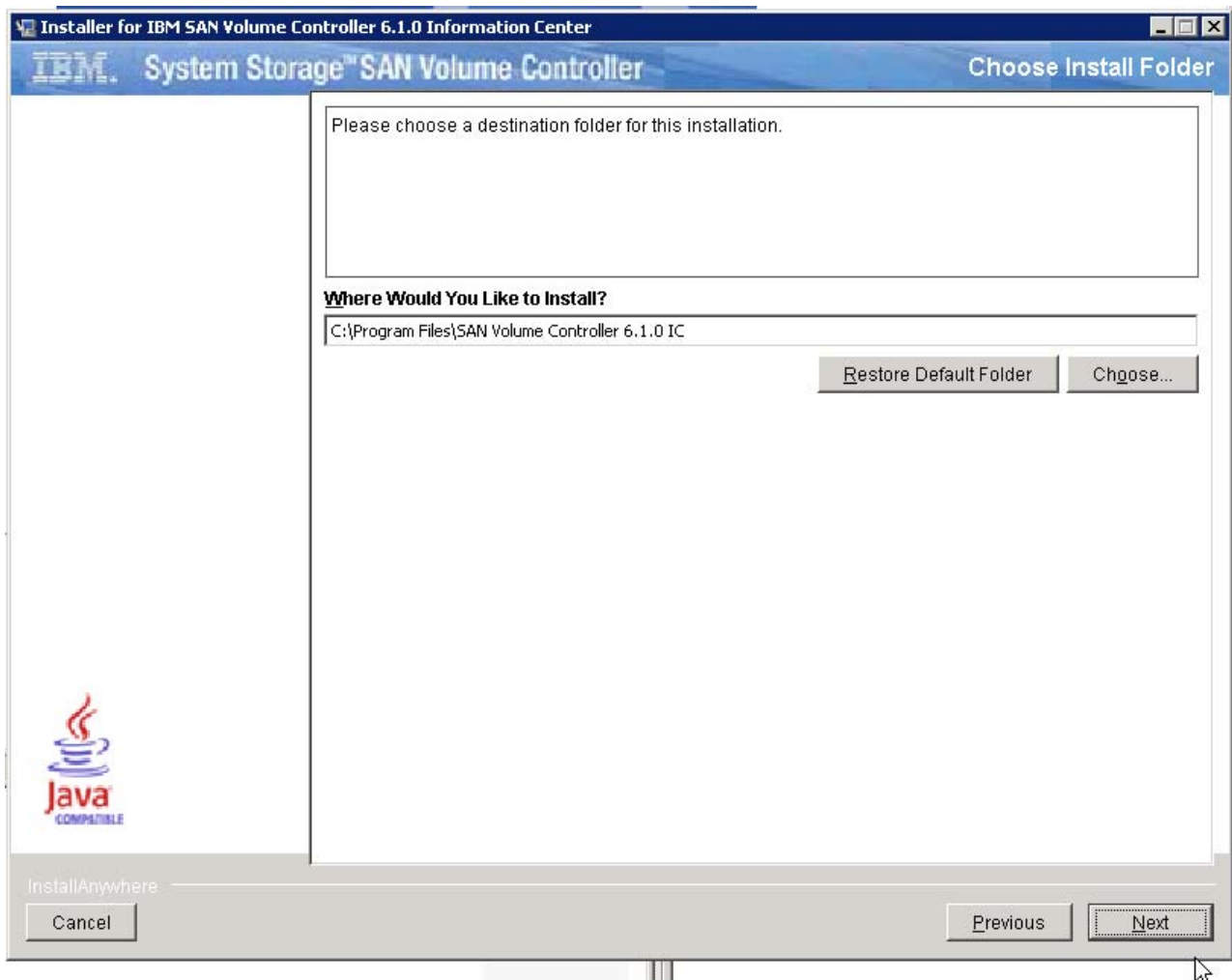
1. Accept the license terms to continue by clicking **Next**.



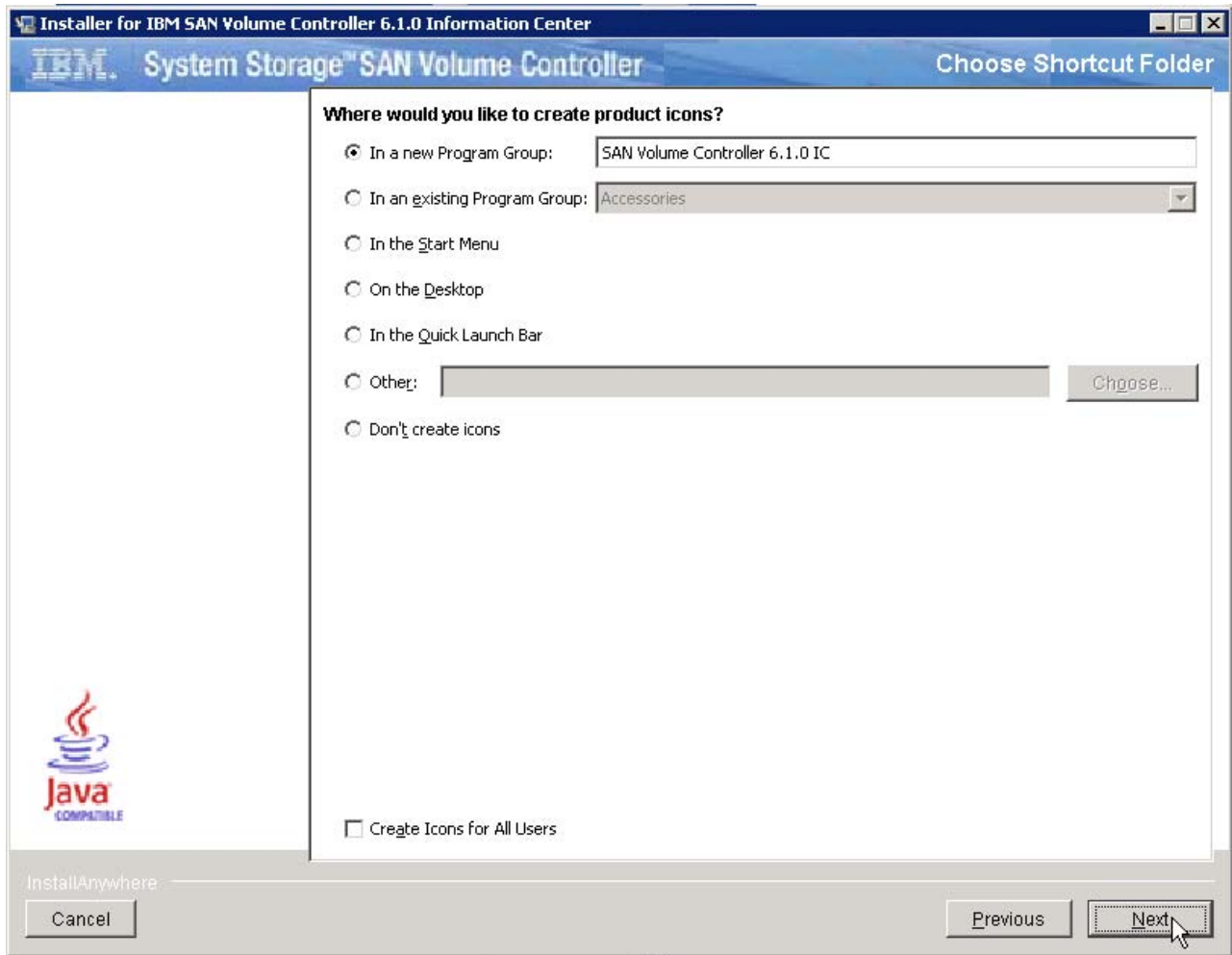
2. When the Installation utility opens, click **Next** to continue.



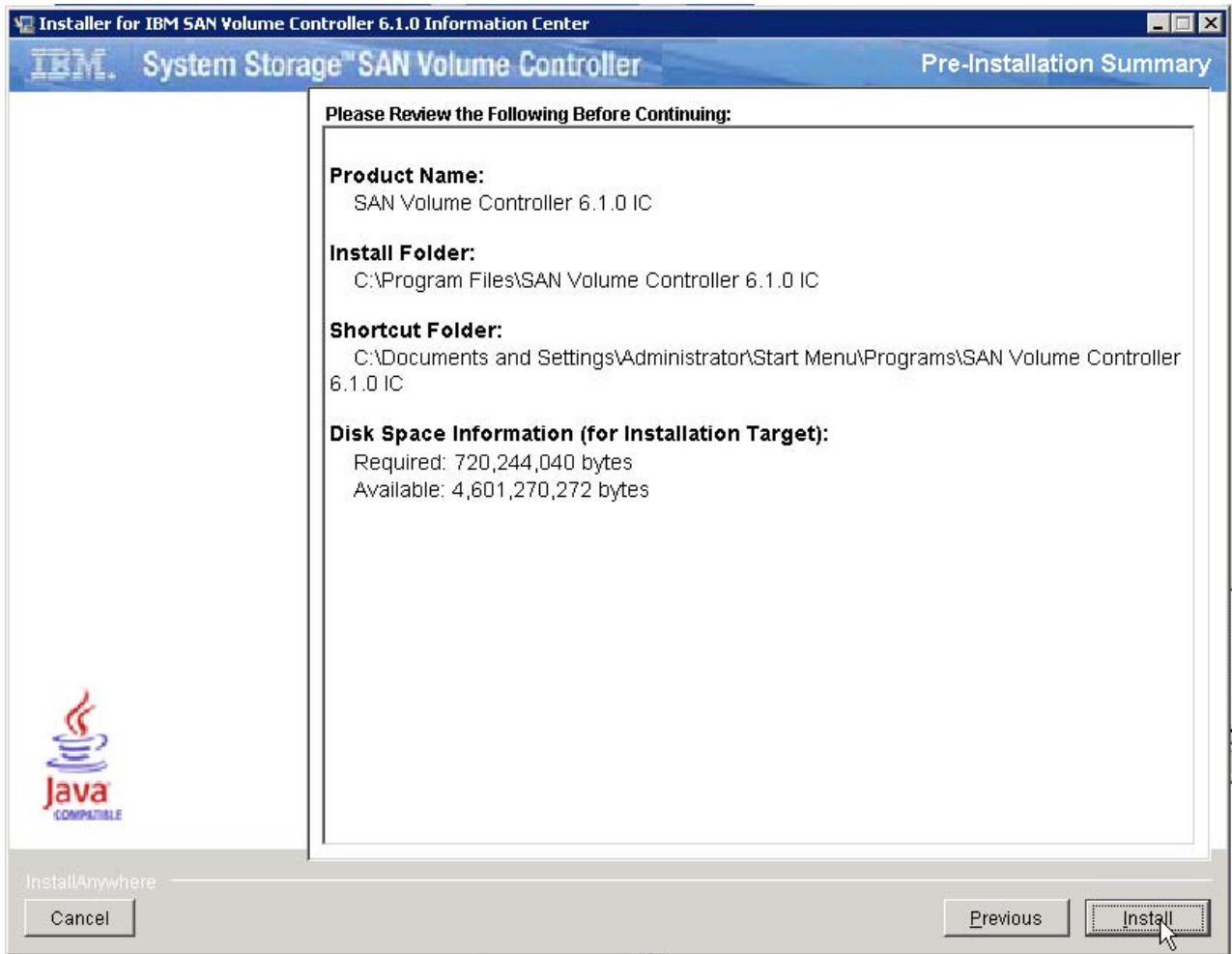
3. Choose an installation location; then click **Next**.



4. Choose a new Program Group (the default) or select a method of accessing the start options for the Information Center.
By default, the Program Group is "SAN Volume Controller 6.1.0 IC".



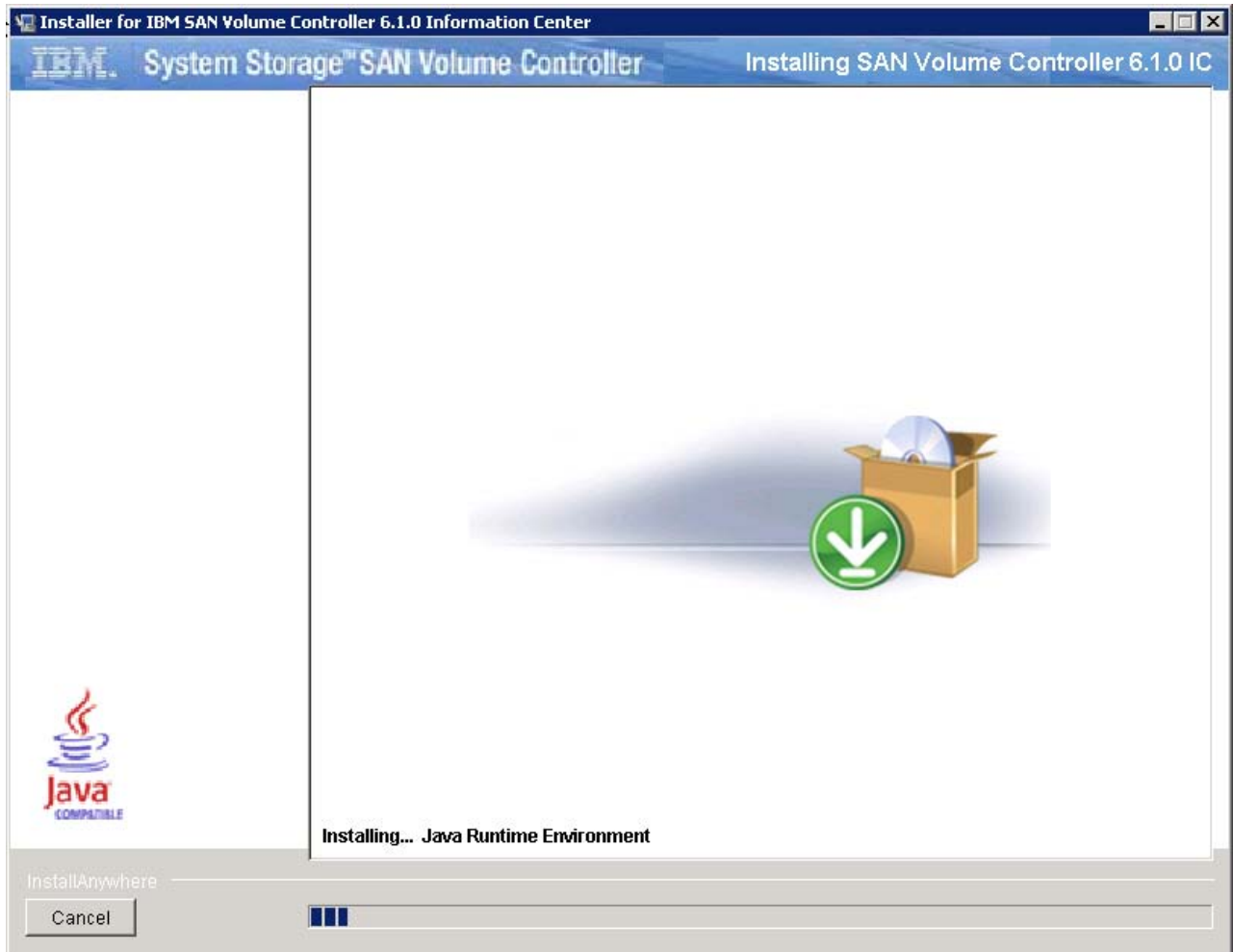
5. Review the selections you have made, then click **Install**.



The SAN Volume Controller Information Center requires approximately 1 GB of free space, primarily because of the size of the IBM User Interface Help System built on Eclipse 3.4.3.

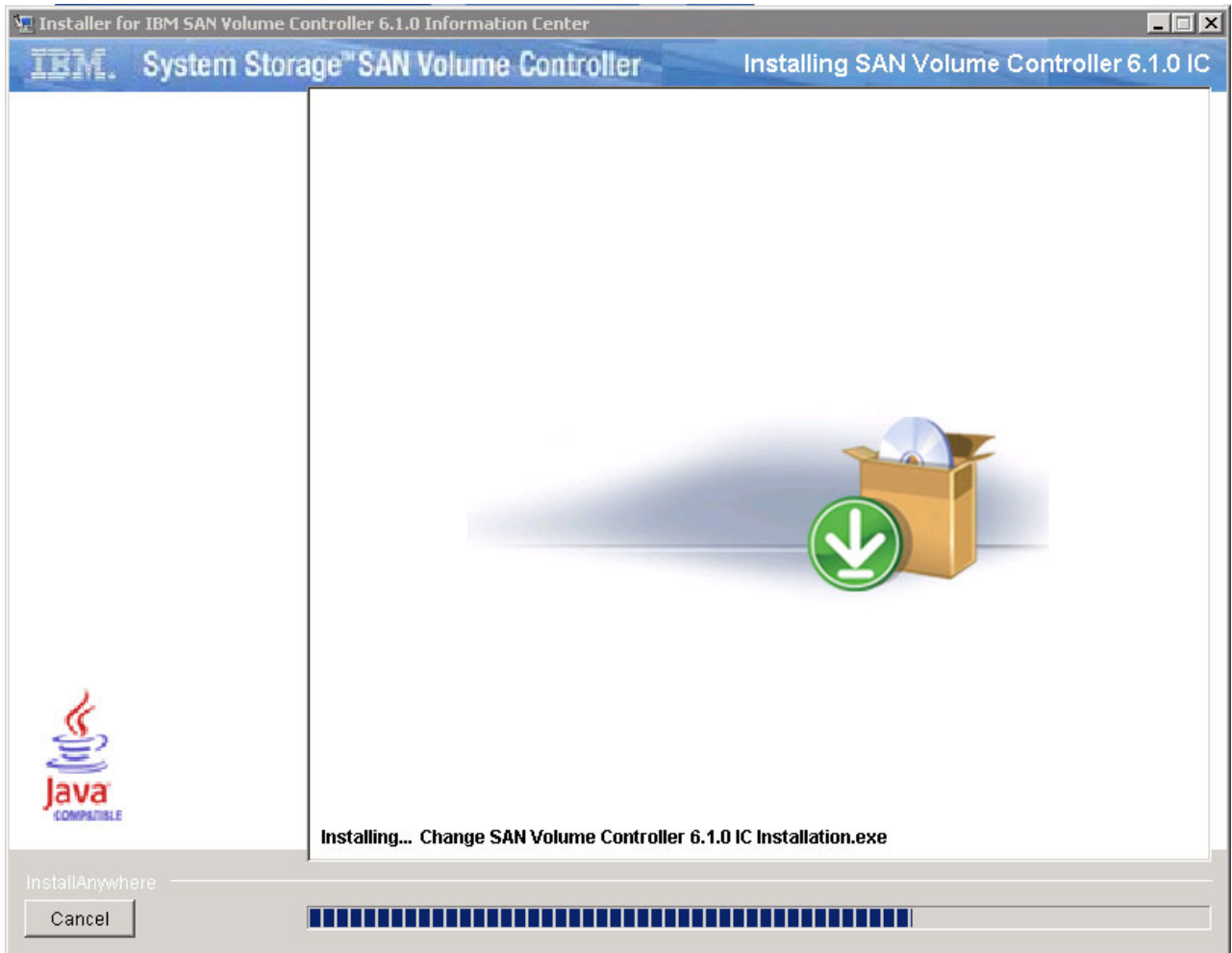
The information center plug-in for the SAN Volume Controller Information Center is approximately 20 MB. There are two previous versions in the SAN Volume Controller Information Center. The 5.1.0 version requires approximately 20 MB. The 4.3.1 version requires approximately 20 MB. The size of the e-Learning Flash modules that you access through the Information Center is approximately 100 MB. The size of the PDFs directory that the installation program installs is approximately 70 MB.

6. As the installation proceeds, you can see it unpack a compressed file that includes all the data.

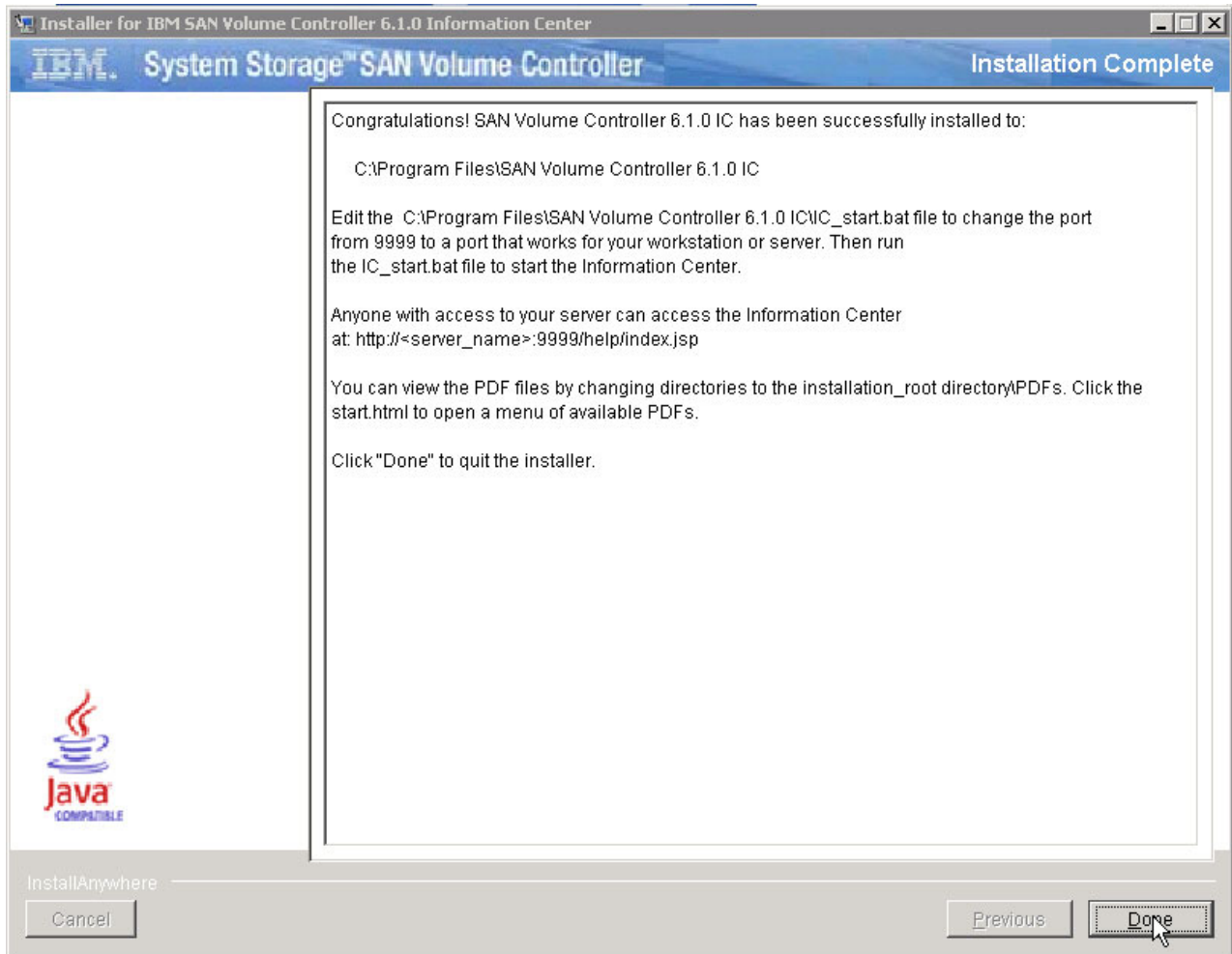


A progress bar at the bottom of the window indicates how far along the installation is. The PDFs are installed in the PDFs folder in the installation root directory.

An uninstall program is created and provided as a menu selection on the Start menu. The InstallAnywhere program names the uninstaller “Change SAN Volume Controller 6.1.0 IC installation.exe”. The uninstaller is the last component to install.



A successful completion panel is displayed after all the code is installed.



Two ways of accessing the SAN Volume Controller Installation Center exist:

- Stand-alone mode which is ideal for a laptop and personal use
- Information center mode, which is referred to as shared mode in this document and in the Start menu

Information Center mode is ideal for a server that everyone in a company might access. The SAN Volume Controller Information Center has more information about each mode.

Stand-alone mode opens the SAN Volume Controller Information Center automatically in a browser window by using a loopback port and web address.

Access the shared-mode Information Center by entering the web address of the Information Center into a browser window. The default for the SAN Volume Controller Information Center is this address:

`http://server_name_or_IP:9999/help/index.jsp`

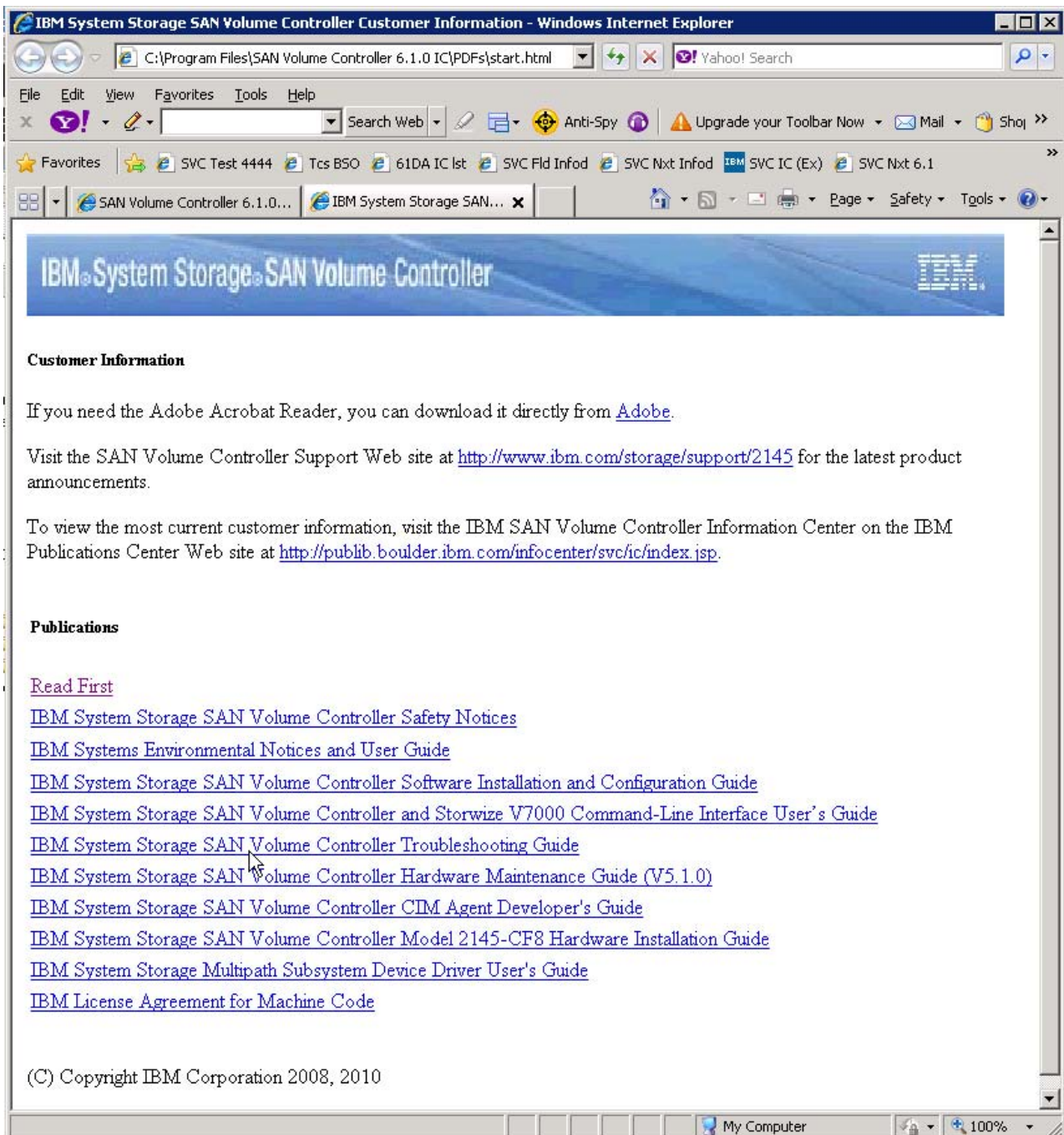
The port is 9999, which a later step shows how to change, if necessary.

You can view the PDFs directly without going through the Start menu by changing directories to the PDFs directory in the installation root directory and clicking the `start.html` file.

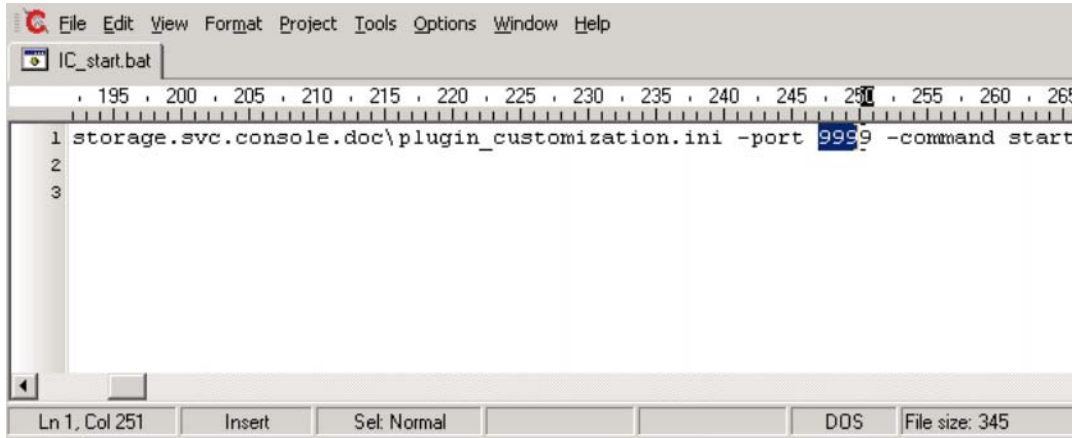
The Start menu has options for SAN Volume Controller 6.1.0 IC to perform these tasks:



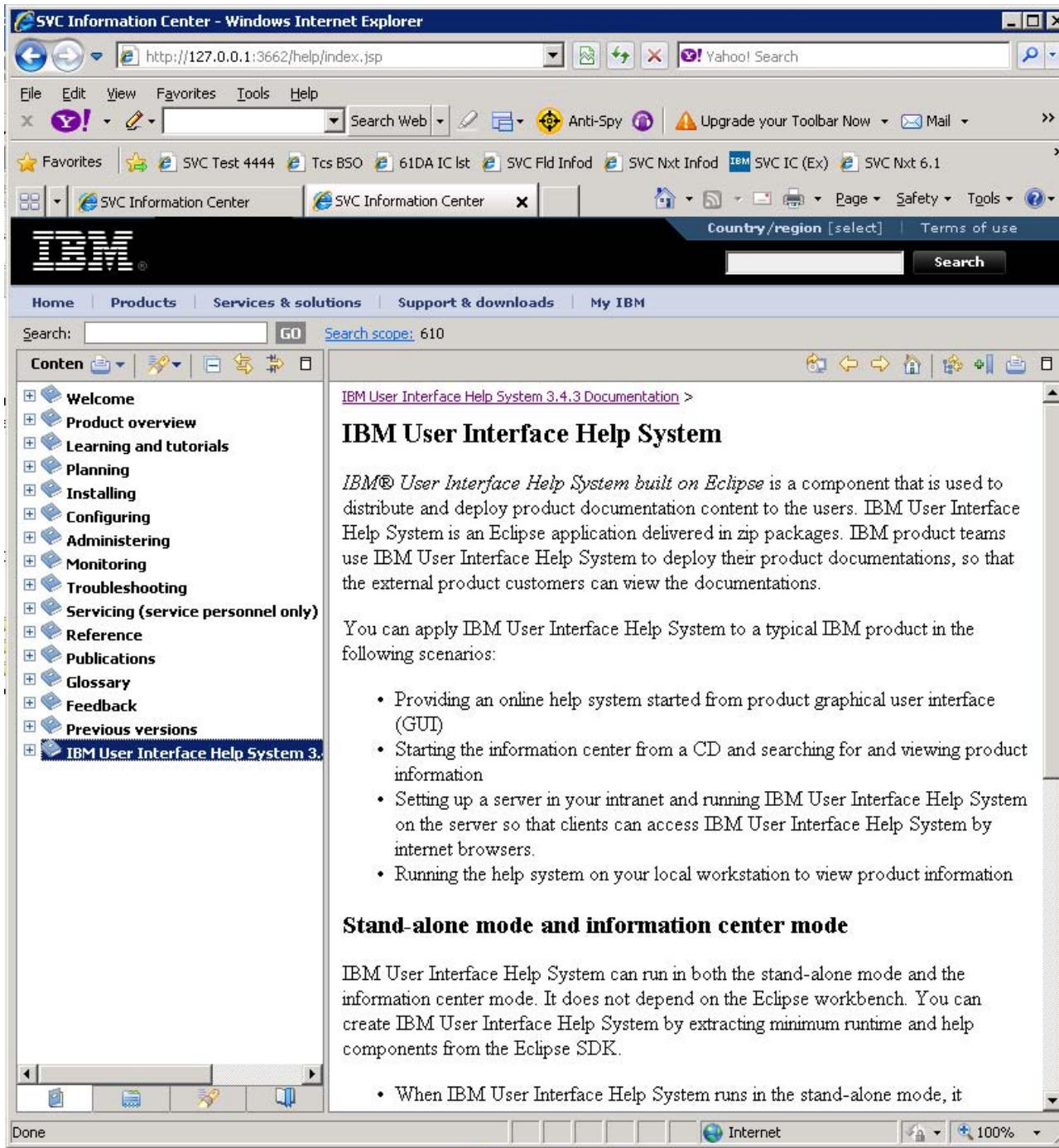
The page that opens when you select to view a PDF is a simple HTML page that is not part of the Information Center. Simply close the page when you are done.



7. Click **Done** on the Installation Program window to close the program.
8. Click **Start** → **All programs** → **SAN Volume Controller 6.1.0 IC** to access the options.
9. To start the Information Center, edit the `installation_root_directory\Storwize 6.1.0 IC\storwizeic\IC_start.bat` file to change the port from **9999** to a port that works for your workstation or server.
To edit the port, open the `installation_root_directory\Storwize 6.1.0 IC\storwizeic\IC_start.bat` file in a flat-file editor.
10. The batch file is a long command string. Search for **9999**, which is the default port. Change it to a port that works for your organization and save the file.

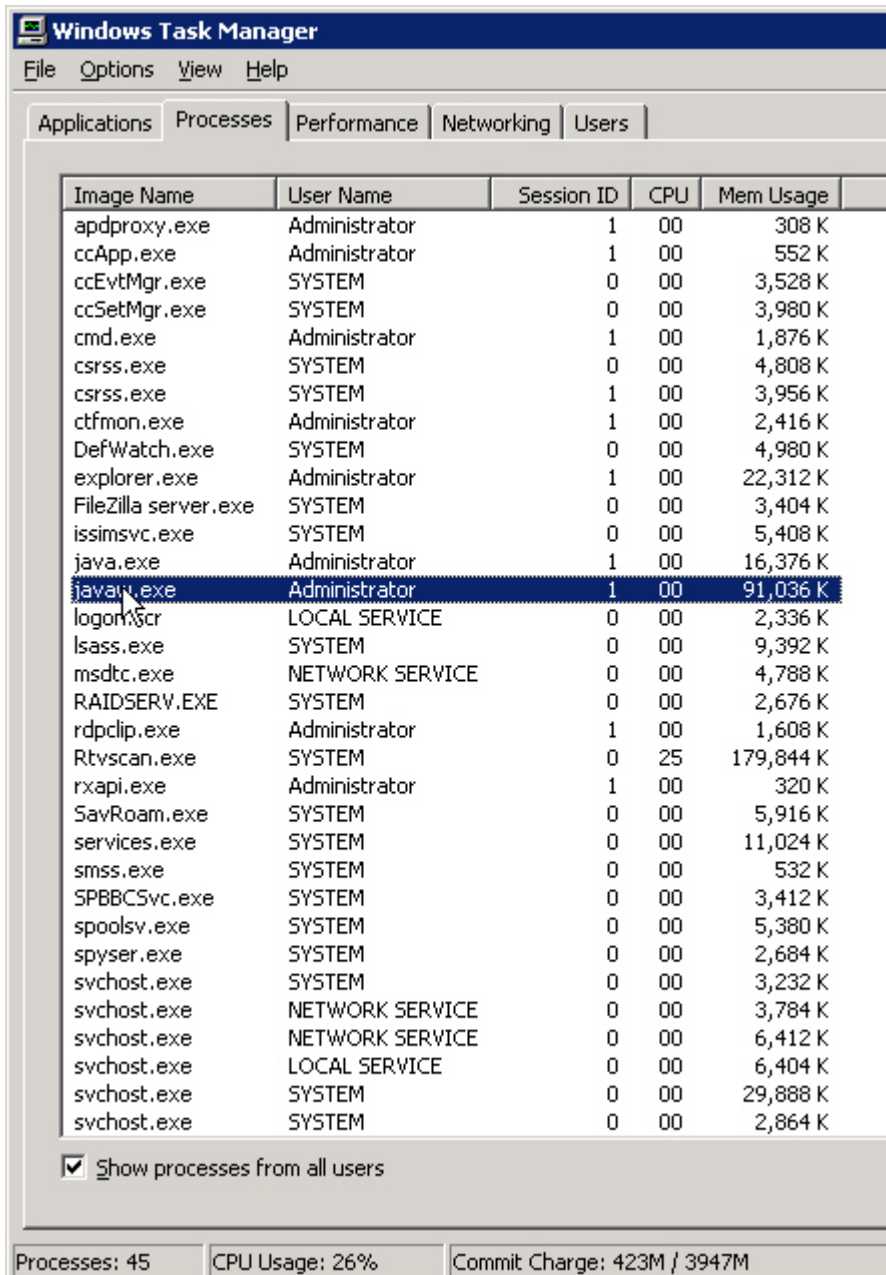


11. Double-click the **IC_start.bat** command file directly to start the SAN Volume Controller Information Center, or select it from the Start menu.
You can start the Information Center immediately on port 9999. Or you can edit the port.
To stop the Information Center, double-click the **IC_end.bat** command file directly, or select it from the Start menu.
12. Anyone who can access the server or workstation by its IP address or fully qualified DNS name can access the Information Center at the `http://server_name_or_IP:9999/help/index.jsp` web address.
13. If you changed the port number, access the information center using the following information from the IBM User Interface Help System built on Eclipse 3.4.3:
 - a. Open the browser in which you want to run the information center.
 - b. Enter the following syntax as the web address:
`http://server_name_where_you_installed:port/help`
For example, if you installed the Information Center on server_abc, using port 3737, your web address is: `http://server_abc:3737/help`
 - c. After typing the web address in the browser, press **Enter** to access the Information Center.
14. After the Information Center starts, you can find more information about stopping, starting, and using the Information Center in the information container that is labeled **IBM User Interface Help System 3.4.3 Documentation**.



This set of topics describes these items:

- Starting and stopping the help system in stand-alone mode, which is how you might do it when you want to run the Information Center just for yourself
- Starting and stopping the help system in information-center mode, which is how you do it on a server that you want many people to be able to access
- Navigating in the help system
- Searching in the help system
- Printing in the help system
- Accessibility and keyboard shortcuts in the help system



16. You can end the stand-alone SAN Volume Controller Information Center javaw instance by selecting **Stop the stand-alone IC** from the Start menu.
17. Uninstall the entire SAN Volume Controller Information Center when you uninstall.
The installation program leaves a series of files that Eclipse created when the information center was started for the first time. You must manually delete these files.