

Managing with the Intuitive Web Manager

A quick list of frequent configuration tasks and their locations is shown below.

To...	Click...
View switch status	Storage Switch
Change general switch settings	Switch > Configuration
Change the IP Address	Switch > Configuration
Change the switch speed	Switch > Configuration
View the event log	Switch > Event Log
Upgrade the firmware	Switch > Files
Change the port settings	Port > Smart Settings
Configure zoning	Advanced Functions > One Step Zoning
Reset the switch	Reboot

Documentation

Links to the User's Guide, Technical Briefs, and other product documentation are available through the Web Manager.

To view the latest product documentation, click: **Help > Documentation**.



Troubleshooting Management Connections

If a serial connection does not occur, cycle power by removing the power cord, waiting for approximately 5 seconds, and then reinstalling the power cord. In addition, check the terminal session's serial port parameters or replace the serial cable. (Make sure it is a null modem cable, preferably the cable that shipped with the switch.)

If the Ethernet activity LED is on, make sure you are using a cross-over Ethernet cable (unless using an Ethernet hub), or check the IP addresses on the switch and workstation as follows:

At a command line prompt, type **ping** *DNSorIP* (where *DNSorIP* is the switch's DNS name or IP address) and press ENTER.

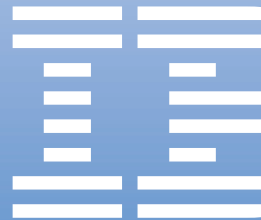
If a "*Reply from...*" or "*...is alive...*" message appears, the devices can communicate.

If a "*Request timed out*" message appears (or the command times out), the devices cannot communicate. Trace the cabling. If needed, reconnect the devices.

IBM TotalStorage®
Storage Switch
2006 Model L10



Quick Reference



GC26-7653-00
26K7914

© Copyright International Business Machines Corporation 2004
All Rights Reserved.

© Copyright Emulex Corporation 2004
All Rights Reserved.
00041446-001 Rev. A

GC26-7653-00



Step 1: Installing & Powering On the Switch

NOTE: Important safety, electromagnetic compatibility, and regulatory information is contained in the *Safety Information* document. The installation and use of this product must be in accordance with the information provided in that document.

1. Place the switch onto a desktop or into a rack. See the *IBM TotalStorage Storage Switch 2006 Model L10 User's Guide* or optional rack-mounting kit instructions for information on installing the switch.
2. Power on the switch by inserting the included power cord.

Step 2: Preparing a Network Interface

Using the serial interface connector on the switch, set the IP parameters for managing the switch over an Ethernet network.

1. Attach one end of the included RS-232 null modem cable to the computer's DB-9 serial port, and attach the other end to the switch's DB-9 serial port.
2. Open a terminal session through your serial terminal emulation program (such as HyperTerminal®) with the appropriate serial port (for example, COM1) and the following serial port parameters:

Bits per second: 19200
 Data bits: 8
 Parity: None
 Stop bits: 1
 Flowcontrol: None

3. If using HyperTerminal, press ENTER to receive a prompt.
4. If using the **tip** command on a UNIX workstation do the following:
 - a. View the */etc/remote* file and create an alias similar to Hardware but with the serial port parameters above. (Suggested name: Switch)
 - b. Use the **tip** command to establish a connection through the created alias, for example **tip switch**. (For more information, see the tip command Manual page.)
5. Type the password at the prompt and press ENTER. (The switch's default password is **password**.)

The default IP parameters are shown below. If you need to change these parameters, set the IP parameters as follows.

6. From the root menu, type **config network ip** and press ENTER.

The switch's current IP parameters are displayed along with a prompt for entering the IP address.

```
Storage Switch - HyperTerminal
File Edit View Call Transfer Help
root>config network ip
Setting      Current      New
IP Address   192.168.1.129 192.168.1.129
Netmask      255.255.255.0 255.255.255.0
Default Gateway 192.168.1.1 192.168.1.1

OK
Enter IP address (192.168.1.129): _
```

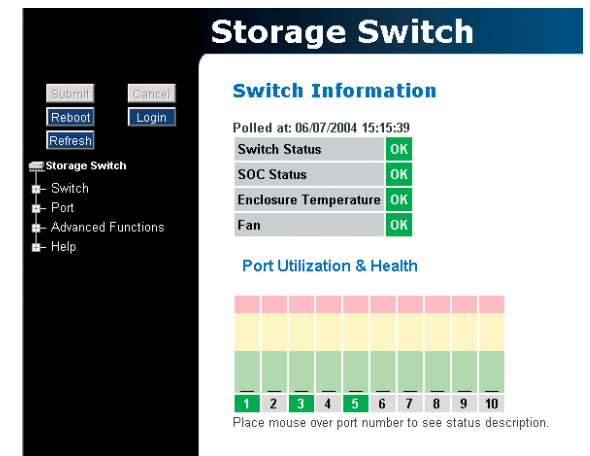
7. Change the IP address and press ENTER.
8. From the root/config/network menu, type **mask** and press ENTER.
9. Change the subnet mask and press ENTER.
10. From the root/config/network menu, type **gateway** and press ENTER.
11. Change the default gateway and press ENTER.
12. Type **save**.
13. Type **root reset**, press ENTER, type **y**, and press ENTER again to reset the switch.
14. Attach one end of an Ethernet RJ-45 twisted pair cable into the switch's 10/100 Ethernet connector and the other end into an operational Ethernet connector.

Step 3: Initial Switch Setup

The Web Manager provides easy navigation through a graphical interface to configure the switch's settings or view switch status. The Web Manager supports Microsoft Internet Explorer for Windows version 5.5 or later and Internet Explorer for Apple version 5.2 or later.

1. Ensure that your workstation has access to the network on which the switch is connected.
2. Open the Microsoft Internet Explorer Web browser.
3. In the address bar, type the switch's DNS name or IP address and press ENTER.

On the left side of the screen, expand and select links for monitoring and configuring the switch.



4. To change the password, click **Switch > Password**. Enter the new password in both text boxes and click **Submit**.

NOTE: You do not have to change the password on the switch. However, anyone can make changes to the switch using the default password until the password is set to a new value.

5. To verify the switch's current date and time, click **Switch > Date & Time**. The Date & Time page displays the current time settings. If you wish to change the time settings, enter a new date and time, or click **Host Time** to set the date and time to the host system's settings, and click **Submit**.

NOTE: The Web Manager does not require a password unless you want to modify the switch's configuration.

6. To enter a name for the switch (if desired), click **Switch > Configuration**. On the Switch Configuration page, enter a name for the switch in the Name text box and click **Submit**. When you change a setting, the Web Manager will prompt you to log into the switch. Type the correct password and click **Log In**. (The default password is **password**.)

To log out of the Web Manager, click **Logout**, or simply close the browser window.

NOTE: The Web Manager will automatically log the user out after 15 minutes of inactivity, unless the Switch Information page is displayed. The Switch Information page automatically updates to display the most current switch status.