

XIV VSS Provider - xProv 2.0.9

Release Notes

IBM XIV Storage System





First Edition (May 2009)

This edition applies to IBM XIV Storage System Software and to all subsequent releases and modifications until otherwise indicated in new editions.

© **Copyright International Business Machines Corporation 2009. All rights reserved.**

US Government Users Restricted Rights – Use, duplication or disclosure restricted by GSA ADP Schedule Contract with IBM Corp.

Contents

Introduction	3
Change List	4
New Features and Components	4
Improved xProv performance	4
Resolved Known Issues and Bug Fixes	4
VSS snapshot operation fails for shadowset containing more than 5 volumes - FIXED	4
Supported environments.....	5
Compatibility Matrix	5
System Requirements	5
Limitations.....	5
Windows Dynamic Disks is not supported	5
Installation Guide	6
Prerequisites	6
Installation Packages	6
Installing xProv	6
Adding an XIV Machine using VSS MachinePool Editor	10

Introduction

The XIV xProv VSS Provider allows for taking Snapshots of Windows applications using the VSS Framework as the application manager and the IBM XIV Storage System as a Snapshot management system.

Change List

New Features and Components

Improved xProv performance

xProv communication with XIV storage array has been greatly optimized as VSS operations involving communication with the storage array are completed in shorter time.

Resolved Known Issues and Bug Fixes

VSS snapshot operation fails for shadowset containing more than 5 volumes - FIXED

The limitation of maximum 5 volumes per VSS snapshot operation is removed with this release.

Supported environments

Compatibility Matrix

OS	<ul style="list-style-type: none">• Windows 2003 x86 SP1 and above• Windows 2003 x64 SP1 and above• Windows 2008 x86 and above• Windows 2008 x64 and above
----	---

System Requirements

.NET Framework	<ul style="list-style-type: none">• 2.0 and above
----------------	---

Limitations

Windows Dynamic Disks is **not supported**

The use of Windows Dynamic Disks for xProv VSS operations is not supported.

Installation Guide

The installation process is comprised of:

1. Installing xProv using a Wizard
2. Configuring IBM XIV machines to work with the installed xProv

The installation starts with the Wizard and automatically takes you to the MachinePool screen, where you add the machines.

Prerequisites

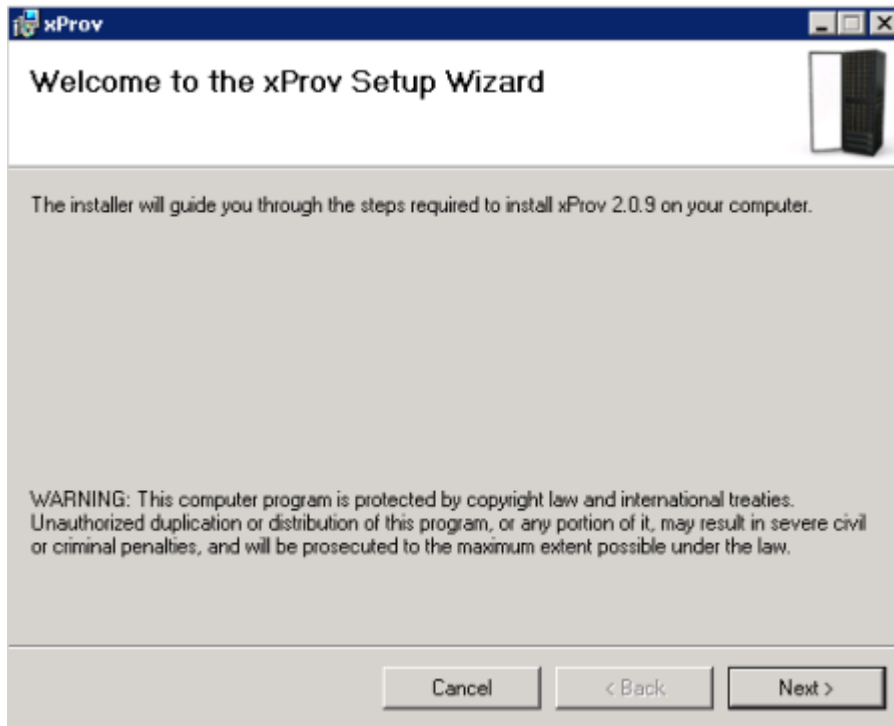
1. Verify that your Windows platform is supported (see above).
2. Verify that you have an IP connectivity to XIV machine(s)
3. Verify that you have XIV Storage Administrator credentials

Installation Packages

xProvSetup-2.0.9-x86.msi	<ul style="list-style-type: none">• Windows 2003 x86 SP1 and above• Windows 2008 x86 and above
xProvSetup-2.0.9-x64.msi	<ul style="list-style-type: none">• Windows 2003 x64 SP1 and above• Windows 2008 x64 and above

Installing xProv

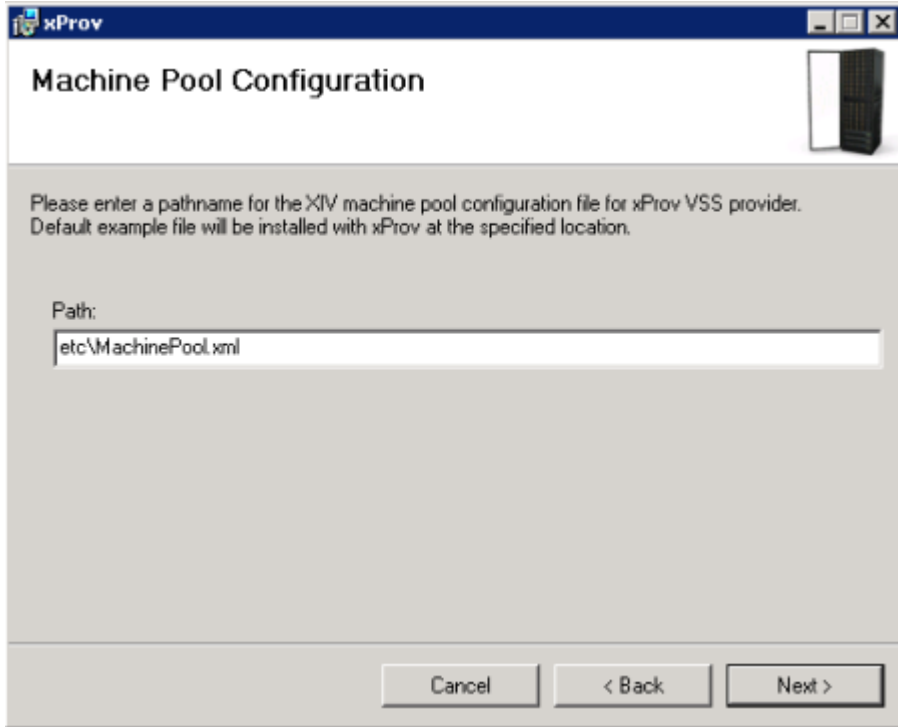
- 1 Run the installation package.
The xProv wizard opens on screen.
Click **Next**.



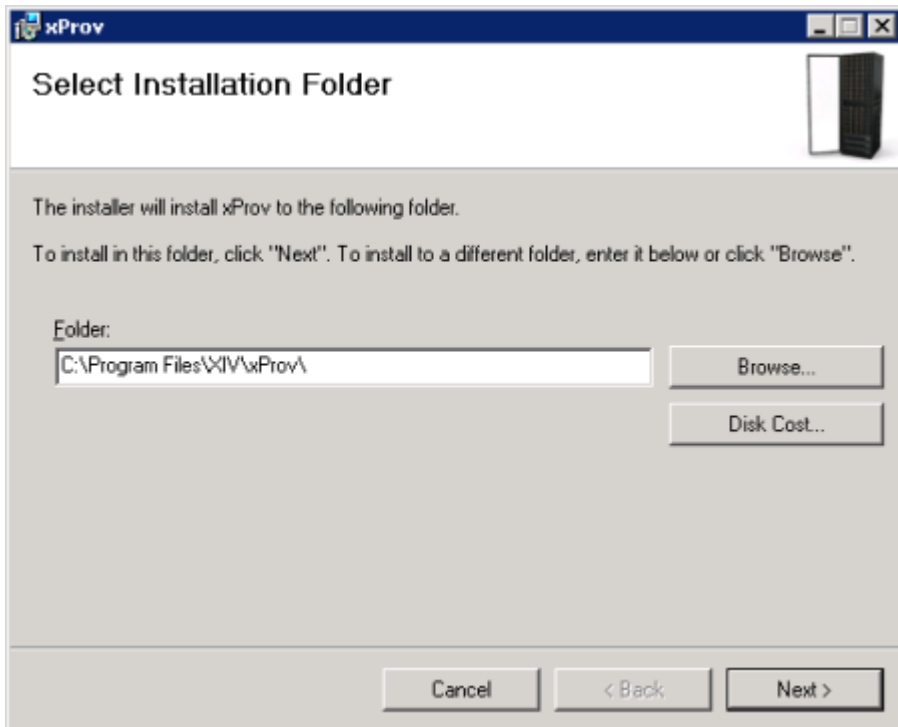
- 2 Approve the license agreement and click **Next**.



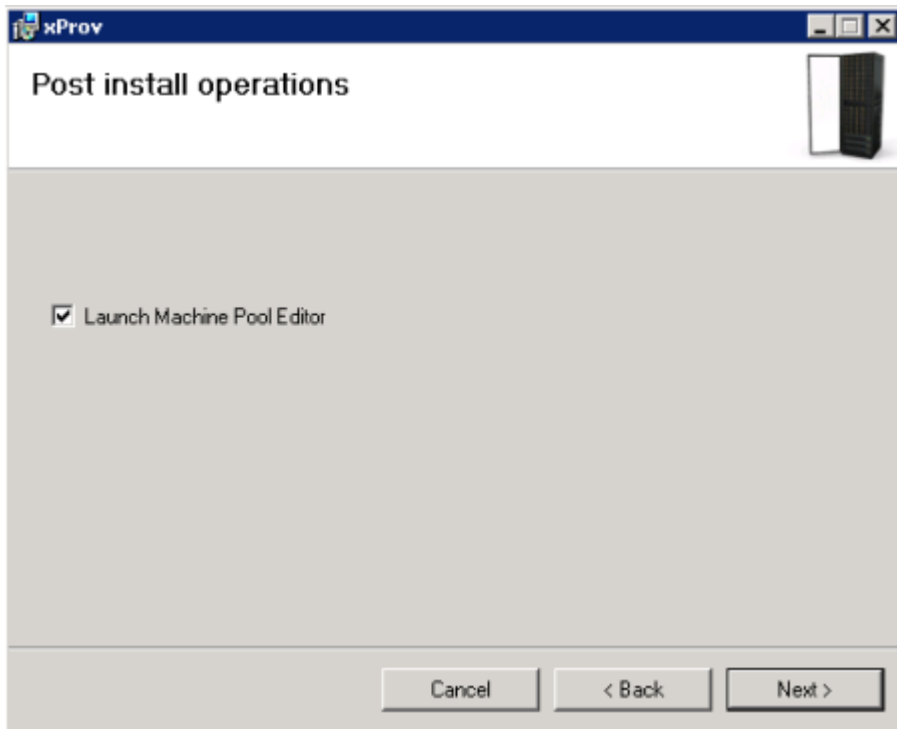
- 3 Approve the path to the Machine Pool configuration file. The default path to this file is:
`<installation folder>\etc\MachinePool.xml`
 Click **Next**.



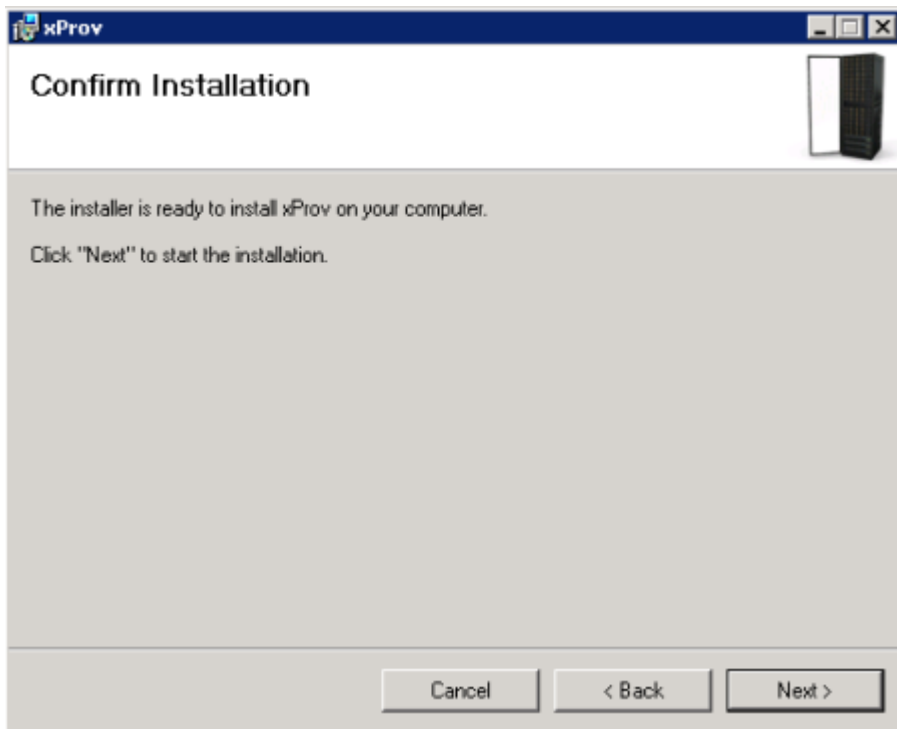
- 4 Set the installation folder and click **Next**.



- 5 Approve launching the Machine Pool Editor after the installation.
Click **Next**.



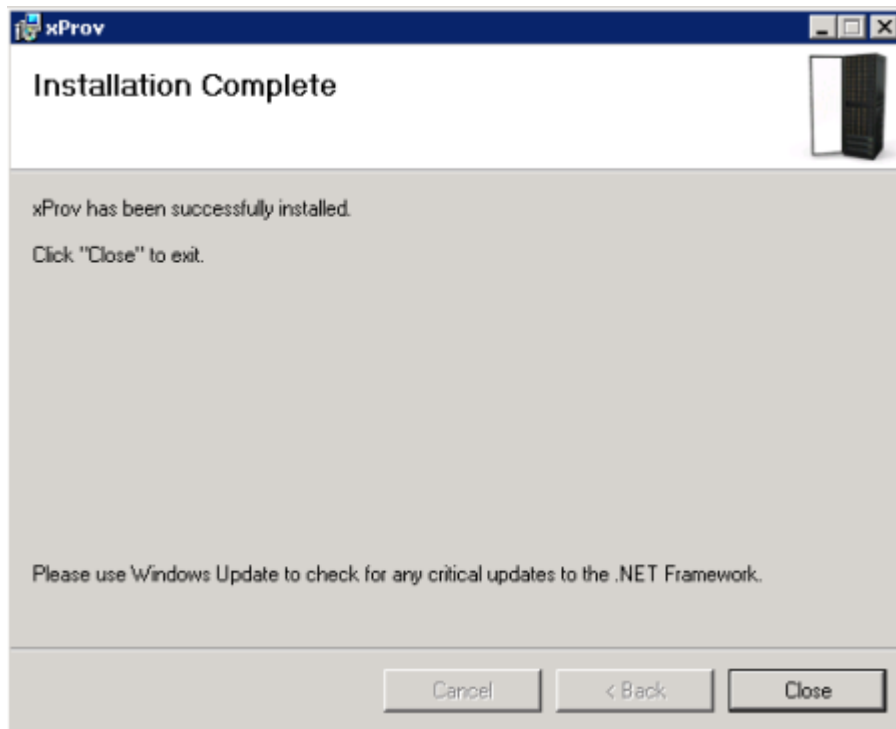
- 6 Click **Next** on the Confirm Installation screen.



xProv is installed.

Following the installation, VSS MachinePool Editor opens.

7 The wizard notifies that the installation is complete.



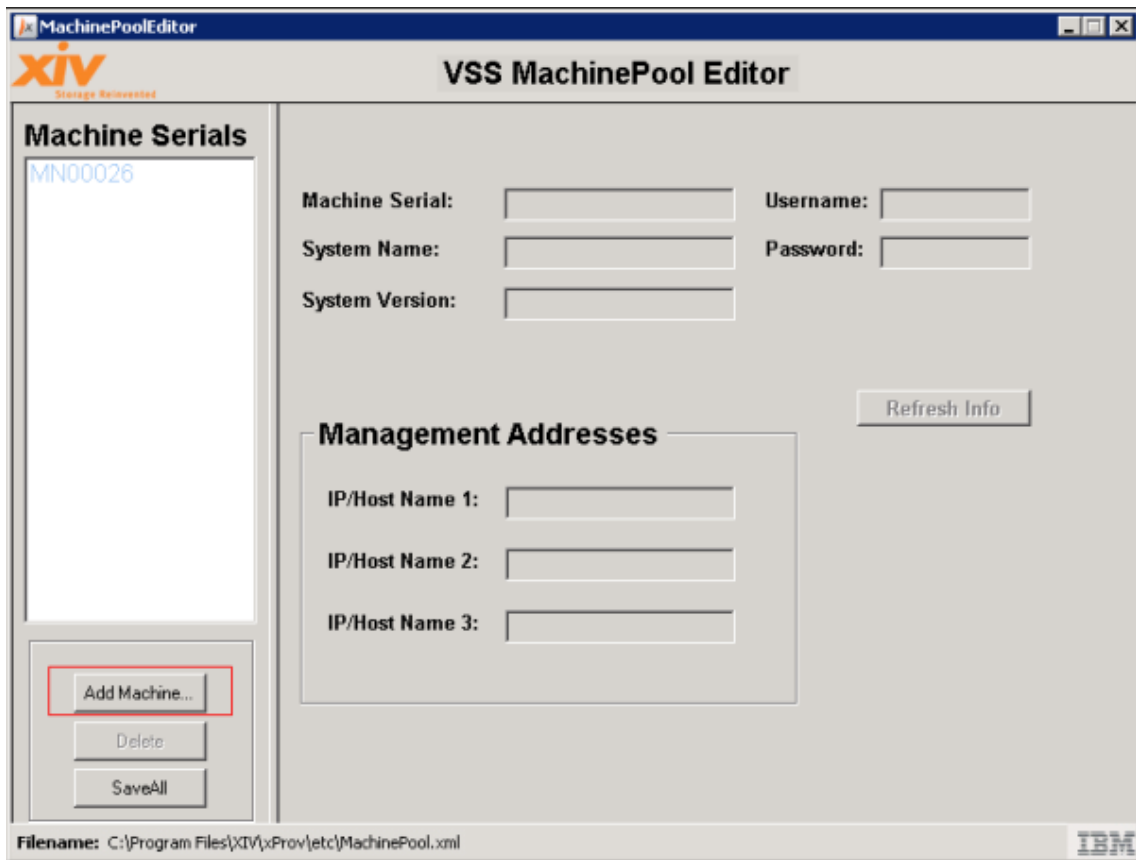
VSS MachinePool Editor opens on screen (see the next section of this document).

Adding an XIV Machine using VSS MachinePool Editor

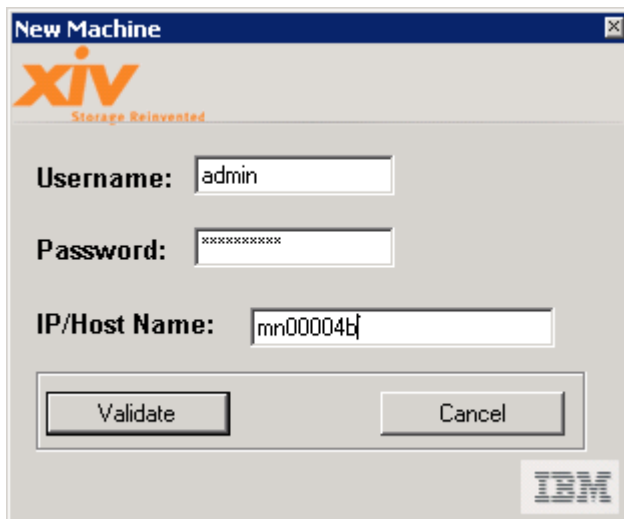
xProv requires XIV Machine connectivity definitions for each XIV Machine that the host is connected to.

xProv is configured via the MachinePool Editor Tool which is bundled with the xProv Install and, following the installation, is now open on screen.

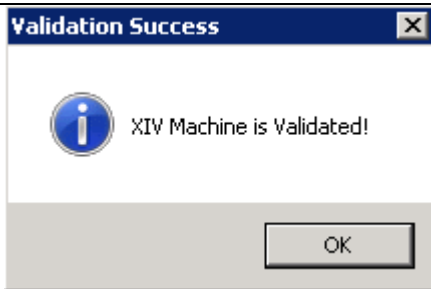
- 1 Click **[Add Machine...]**



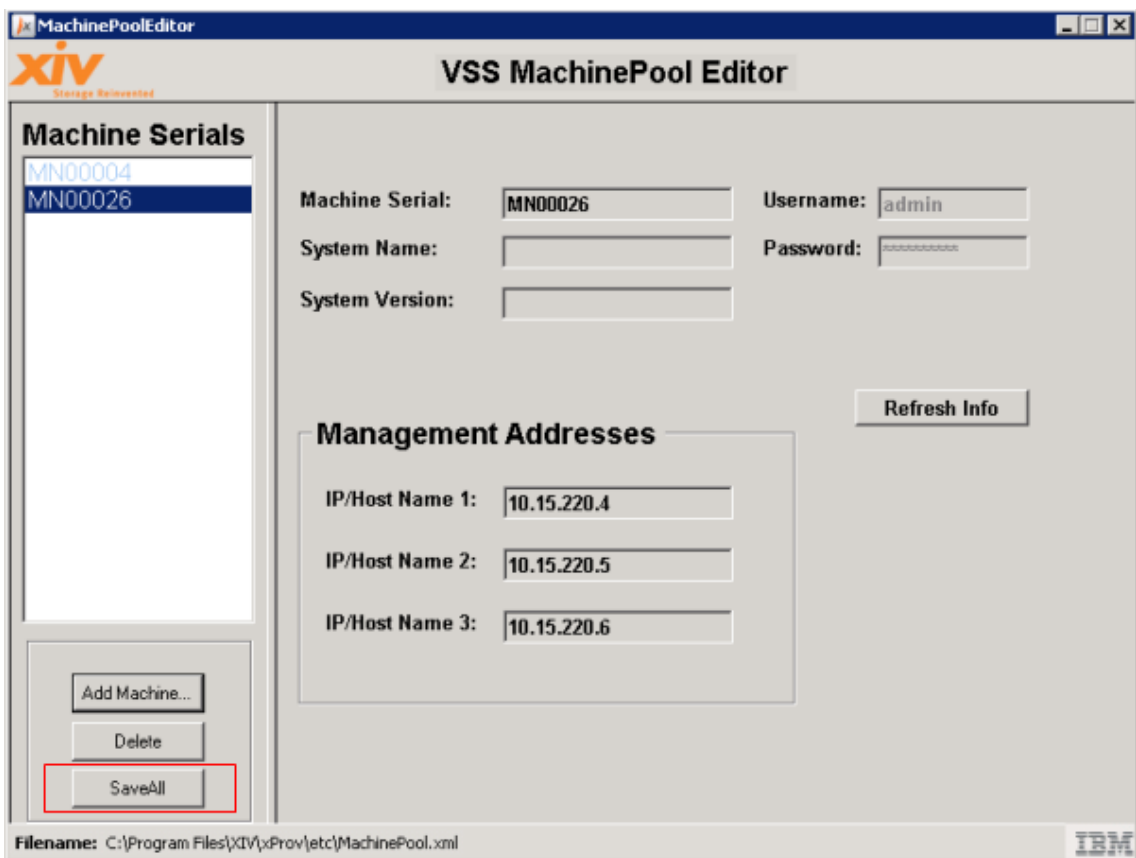
- 2 Enter the Machine's user, password and IP/Host Name.
Click **Validate**.



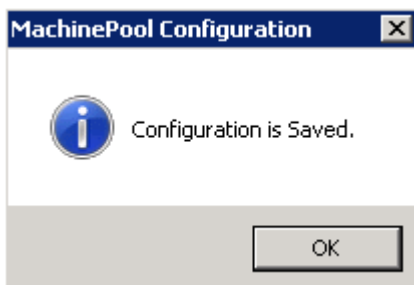
A validation note appears on screen.



- The machine is added to the MachinePool list.
Click **Save All** to save the connectivity to the Machines.



A confirmation message appears on screen.



xProv is now configured to work with this Storage System as its Snapshot management system.