

IBM Remote Support Proxy Utility  
Version 1.3.x

*User Guide*



**Note**

Before using this information and the product it supports, read the information in [“Notices” on page 13.](#)

Publication number: GA32-0795-07. This publication applies to the version 1.3.x of IBM Remote Support Proxy utility and to all subsequent releases and modifications until otherwise indicated in a newer publication.

© **Copyright International Business Machines Corporation 2010, 2019.**

US Government Users Restricted Rights – Use, duplication or disclosure restricted by GSA ADP Schedule Contract with IBM Corp.

---

# Contents

<b>About this guide.....</b>	<b>v</b>
Who should use this guide.....	v
Document conventions.....	v
Related information and publications.....	v
Getting information, help, and service.....	v
IBM Publications Center.....	vi
Sending or posting your comments.....	vi
 <b>Chapter 1. Introducing the IBM Remote Support Proxy utility.....</b>	 <b>1</b>
Compatibility and requirements.....	1
 <b>Chapter 2. Installation.....</b>	 <b>3</b>
Installing and configuring for the first time.....	3
Installing the software package.....	3
Configuring the Remote Support Proxy service.....	4
Starting the Remote Support Proxy service.....	7
Configuring storage systems.....	8
Upgrading and configuring an existing installation.....	8
Uninstalling the Remote Support Proxy.....	9
 <b>Chapter 3. Management.....</b>	 <b>11</b>
Starting and stopping the Remote Support Proxy service.....	11
Monitoring status.....	11
Updating remote-support server information.....	12
 <b>Notices.....</b>	 <b>13</b>
Trademarks.....	14



## About this guide

---

This guide describes how to install, configure, and use the IBM Remote Support Proxy to connect an IBM storage system to the IBM Remote Support Center.

## Who should use this guide

---

This guide is intended for customers who want to connect an IBM storage system to the IBM Remote Support Center using the remote support proxy. To use this guide, you must be familiar with the IBM storage system and the IBM Remote Support Center.

## Document conventions

---

These notices are used in this guide to highlight key information.

---

**Note:** These notices provide important tips, guidance, or advice.

---

---

**Important:** These notices provide information or advice that might help you avoid inconvenient or difficult situations.

---



---

**Attention:** These notices indicate possible damage to programs, devices, or data. An attention notice appears before the instruction or situation in which damage can occur.

---

## Related information and publications

---

You can find additional information and publications related to IBM Remote Support Proxy utility on the following information sources.

- [IBM FlashSystem® A9000 on IBM Knowledge Center](http://ibm.com/support/knowledgecenter/STJKMM) (ibm.com/support/knowledgecenter/STJKMM)
- [IBM FlashSystem A9000R on IBM Knowledge Center](http://ibm.com/support/knowledgecenter/STJKN5) (ibm.com/support/knowledgecenter/STJKN5)
- [IBM Spectrum Accelerate on IBM Knowledge Center](http://ibm.com/support/knowledgecenter/STZSWD) (ibm.com/support/knowledgecenter/STZSWD)
- [IBM XIV® Storage System on IBM Knowledge Center](http://ibm.com/support/knowledgecenter/STJTAG) (ibm.com/support/knowledgecenter/STJTAG)

## Getting information, help, and service

---

If you need help, service, technical assistance, or want more information about IBM products, you can find various sources to assist you. You can view the following websites to get information about IBM products and services and to find the latest technical information and support.

- [IBM website](http://ibm.com) (ibm.com®)
- [IBM Support Portal website](http://ibm.com/storage/support) (ibm.com/storage/support)
- [IBM Directory of Worldwide Contacts website](http://ibm.com/planetwide) (ibm.com/planetwide)
- [IBM developerWorks Answers website](http://www.developer.ibm.com/answers) (www.developer.ibm.com/answers)
- [IBM service requests and PMRs](http://ibm.com/support/servicerequest/Home.action) (ibm.com/support/servicerequest/Home.action)

Use the Directory of Worldwide Contacts to find the appropriate phone number for initiating voice call support. Voice calls arrive to Level 1 or Front Line Support.

## IBM Publications Center

The IBM Publications Center is a worldwide central repository for IBM product publications and marketing material.

The [IBM Publications Center website](http://ibm.com/shop/publications/order) ([ibm.com/shop/publications/order](http://ibm.com/shop/publications/order)) offers customized search functions to help you find the publications that you need. You can view or download publications at no charge.

## Sending or posting your comments

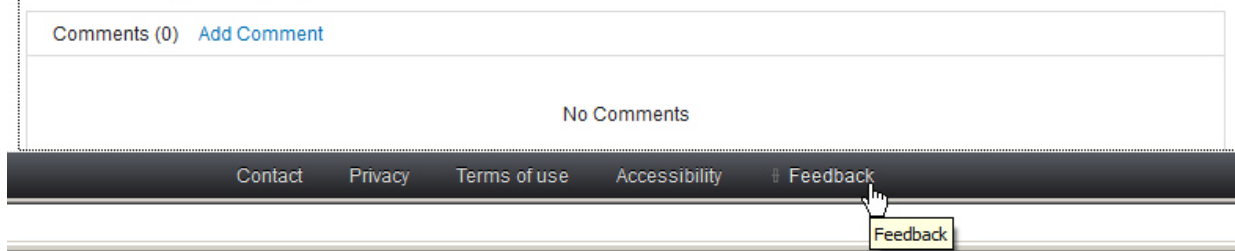
Your feedback is important in helping to provide the most accurate and highest quality information.

### Procedure

To submit any comments about this guide:

- Go to [IBM Knowledge Center](http://www.ibm.com/support/knowledgecenter/STJKMM) (<http://www.ibm.com/support/knowledgecenter/STJKMM>), drill down to the relevant page, and then click the **Feedback** link that is located at the bottom of the page.

By adding a comment, you accept our [IBM Knowledge Center Terms of Use](#). Your comments entered on this IBM Knowledge Center site do not represent the views or opinions of IBM. IBM, in its sole discretion, reserves the right to remove any comments from this site. IBM is not responsible for, and does not validate or confirm, the correctness or accuracy of any comments you post. IBM does not endorse any of your comments. All IBM comments are provided "AS IS" and are not warranted by IBM in any way.



The feedback form is displayed and you can use it to enter and submit your comments privately.

- You can post a public comment on the Knowledge Center page that you are viewing, by clicking **Add Comment**. For this option, you must first log in to IBM Knowledge Center with your IBMid.
- You can send your comments by email to [starpubs@us.ibm.com](mailto:starpubs@us.ibm.com). Be sure to include the following information:
  - Exact publication title and product version
  - Publication form number (for example: SC01-0001-01)
  - Page, table, or illustration numbers that you are commenting on
  - A detailed description of any information that should be changed

**Note:** When you send information to IBM, you grant IBM a nonexclusive right to use or distribute the information in any way it believes appropriate without incurring any obligation to you.

---

# Chapter 1. Introduction

The remote support system for IBM® storage systems requires TCP/IP communication between the storage system and the IBM Remote Support Center. When a storage system does not have direct access to the Internet (for example, due to a firewall), you can use the Remote Support Proxy to facilitate that connection.

The IBM Remote Support Proxy utility creates a network proxy that connects one or more IBM storage systems to IBM remote-support servers in the IBM Remote Support Center. It establishes a service on a Linux system that has Internet connectivity to the IBM Remote Support Center and local network connectivity to the storage system. The connection to the IBM Remote Support Center is initiated by the storage system through its management graphical user interface (GUI) or command-line interface (CLI).

The figure below illustrates a typical network configuration that uses the Remote Support Proxy. The communication between the storage system and the Remote Support Proxy uses Secure Shell (SSH). The communication between the Remote Support Proxy and the Remote Support Center is encrypted with an additional layer of Secure Sockets Layer (SSL).

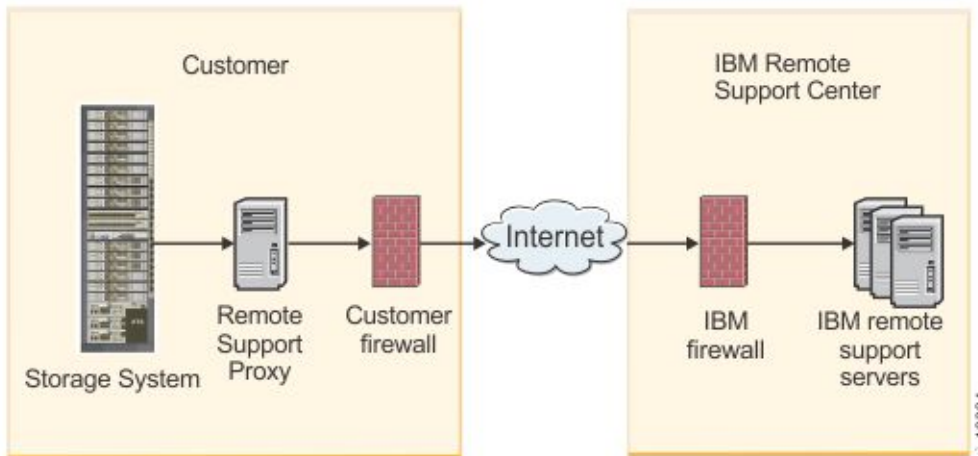


Figure 1. Remote Support Proxy components

---

## Compatibility and requirements

For the complete and up-to-date information about the compatibility and requirements of the IBM Remote Support Proxy utility, refer to its latest release notes.





---

## Chapter 2. Installation

Use this information to either install or upgrade the IBM Remote Support Proxy utility.

### Installing and configuring for the first time

---

This information describes how to install and configure the IBM Remote Support Proxy utility on a system that has access to an IBM storage system and the Internet.

#### Installing the software package

This information describes how to download and install the IBM Remote Support Proxy utility.

##### Procedure

To download and install the IBM Remote Support Proxy utility, perform these steps:

1. Download the Remote Support Proxy utility installation package and *Release Notes* from [IBM Fix Central](#).
2. Assign the downloaded file execution permissions by running the following command:

```
chmod +x file_name.bin
```

Where *file\_name.bin* is the name of the installation package for the appropriate platform.

3. Install the IBM Remote Support Proxy utility using the following command:

```
./file_name.bin
```

Where *file\_name.bin* is the name of the installation package for the appropriate platform.

A software license is displayed.

4. Follow the instructions to read through and accept the license.

The installation program installs an RPM package named `xivproxy` and then exits.

##### Results

The following files are installed on the local system:

##### **/usr/bin/xivproxy**

The binary executable file.

##### **/etc/xiv/proxy.conf**

The configuration file. You must update this file before starting the Remote Support Proxy service.

##### **/etc/init.d/xivproxy**

The system service for starting and stopping the Remote Support Proxy. The service is configured to start when the server boots. It does not start automatically after installation.

##### **/usr/share/xiv/syslog-logger**

The logger program that can be modified to integrate with the existing logging and monitoring systems.

##### **/usr/share/doc/xivproxy-version/license**

The directory containing the accepted software license for the Remote Support Proxy in multiple languages.

In the directory path, *version* is the product version.

##### **/usr/share/xiv/proxy\_id\_rsa**

A cryptographic file used by the configuration-retrieval function.

**Important:** If a restricted user is specified by using the **User** configuration parameter, that user must be able to read this file.

#### **/var/lib/xiv/proxy**

The directory used to store configuration updates.

**Important:** If a restricted user is specified by using the **User** configuration parameter, that user must be able to write to this directory.

## **Configuring the Remote Support Proxy service**

Configure the Remote Support Proxy service before starting it.

### **Procedure**

To configure the Remote Support Proxy service, edit the following parameters in the `/etc/xiv/proxy.conf` file:

#### **ListenInterface**

The IPv4 address, IPv6 address, or interface name on which the proxy service is to listen for incoming connections from the storage system (for example, `192.0.2.1`, `2001:DB8:0:0:0:0:0:0`, or `eth0`).

If you specify an IPv4 or IPv6 address, the proxy service listens on only the specified IP address.

If you specify an interface name, the proxy service listens on all allowed addresses. You can configure which addresses are allowed by setting the `UseIPv4`, `UseIPv6`, and `UseIPv6LinkLocalAddress` parameters. By default, the proxy service listens on both IPv4 and IPv6 addresses.

If you specify the interface name, the name must be the same as the output from the `ifconfig` command.

**Important:** The storage system must have access to the system running the Remote Support Proxy as defined by this interface name or IP address.

#### **ListenPort**

The TCP port on which the Remote Support Proxy is to listen for incoming connections from the storage system (for example, `8988`).

**Important:** The storage system must have access to the system running the Remote Support Proxy as defined by this port.

#### **UseIPv6**

(Optional) When an interface name is specified for the `ListenInterface` or `StatusInterface` parameter, this parameter determines whether the proxy service listens on the interfaces IPv6 addresses (for example, `2001:DB8:0:0:0:0:0:0`) if they exist.

This parameter has no effect if an interface does not have an IPv6 address.

If `UseIPv6` is set to `yes`, the proxy service listens on the IPv6 address if one exists. This is the default value.

To also listen on an IPv6 link-local address, `UseIPv6LinkLocalAddress` must be set to `yes`.

If `UseIPv6` is set to `no`, the proxy service does not listen on any IPv6 address, including the IPv6 link-local address. In this case, the interface must have an IPv4 address defined, and `UseIPv4` cannot be set to `no`.

**Important:** Setting `UseIPv6` to `no` does not affect outgoing communication from the Remote Support Proxy to the Remote Support Center. This communication might still use the IPv6 protocol.

#### **UseIPv6LinkLocalAddress**

(Optional) When an interface name is specified for the `ListenInterface` or `StatusInterface` parameter, this parameter determines whether the proxy server listens on the IPv6 link-local address (for example, `FE80:DB8:0:0:0:0:0:0`).

By default, `UseIPv6LinkLocalAddress` is set to `no`.

**Notes:**

- If a numeric IPv6 link-local address is used in `ListenInterface` or `StatusInterface`, this parameter must be set to yes.
- `UseIPv6LinkLocalAddress` must not be set yes when `UseIPv6` is set to no.

**UseIPv4**

(Optional) When an interface name is specified for the `ListenInterface` or `StatusInterface` parameter, this parameter determines whether the proxy service listens on the interface's IPv4 addresses (for example, `192.0.2.1`) if they exist.

This parameter has no effect if an interface does not have an IPv4 address.

If `UseIPv4` is set to yes, the proxy service listens on the IPv4 address if one exists. This is the default value.

If `UseIPv4` is set to no, the proxy service does not listen on the IPv4 address. In this case, the interface must have an IPv6 address defined, and `UseIPv6` cannot be set to no.

**Important:** Setting `UseIPv6` to no does not affect outgoing communication from the Remote Support Proxy to the Remote Support Center. This communication might still use the IPv6 protocol.

**HTTPProxyHost**

(Optional) The IPv4 address, IPv6 address, or host name of the HTTP proxy server (for example, `192.0.2.3`).

If your network does not allow a direct connection to the Internet, you must use an HTTP proxy server. If so, set the `HTTPProxyHost` and `HTTPProxyPort` parameters.

**Note:** The HTTP proxy must be configured to allow outgoing HTTPS connections.

**HTTPProxyPort**

(Optional) The port of the HTTP proxy server (for example, `8080`).

**HTTPProxyUser**

(Optional) The user ID used to authenticate to the HTTP proxy (for example, `ibm_user`).

By default, the Remote Support Proxy does not use HTTP authentication. If authentication is required to access sites outside your network, set the `HTTPProxyUser` and `HTTPProxyPassword` parameters.

**Note:** The only supported method is basic authentication. Challenge/Response methods, such as NTLM, are not supported.

**HTTPProxyPassword**

(Optional) The password used to authenticate to the HTTP proxy (for example, `passwd`).

**StatusInterface**

(Optional) The IPv4 address, IPv6 address, or interface name of an additional TCP port on which the proxy service listens to monitor status (for example, `192.0.2.1`, `2001:DB8:0:0:0:0:0:0`, or `eth0`).

If you specify an IPv4 or IPv6 address, the proxy service listens on only the specified IP address.

If you specify an interface name, the proxy service listens on all allowed addresses. You can configure which addresses are allowed by setting the `UseIPv4`, `UseIPv6`, and `UseIPv6LinkLocalAddress` parameters. By default, the proxy service listens on both IPv4 and IPv6 addresses.

When you connect to the status port (for example, by using **telnet**), the proxy service displays a status message and then closes the connection.

If the **StatusInterface** and **StatusPort** parameters are not configured, the status service is disabled.

When the status service is enabled, you can retrieve the status by running the service `xivproxy status` command.

To enable status queries only from the local server, use the loopback interface `lo`. To enable status queries over the network, use a network interface.

## StatusPort

(Optional) The port number of an additional TCP port on which the Remote Support Proxy listens to monitor status (for example, 8966).

If the **StatusInterface** and **StatusPort** parameters are not configured, the status service is disabled.

## User

(Optional) The user name of a restricted user that is used to run the Remote Support Proxy (for example, nobody).

If the proxy runs as the root user, it drops its privileges to match the privileges of the specified user or to nobody if no user is specified. This is done after binding ports and opening the log file, in case they require root access.

## Logger

(Optional) Location of the logger program (for example, /usr/share/xiv/syslog-logger).

See the contents of the /usr/share/xiv/syslog-logger file for more information and example code.

**Note:** The logger runs as a restricted user and not the root user.

The Remote Support Proxy runs the logger each time the storage system connects to and disconnects from the Remote Support Center, or when an error occurs. You can modify the logger program to integrate with existing logging and monitoring tools.

The logger program runs without any arguments and with the following predefined environment variables:

```
PATH=/bin:/sbin:/usr/bin:/usr/sbin
EVENT={connect|disconnect|error}
CLIENT=IP_address:port
SERVER=IP_address:port
SERVER_LIST=IP_address:port,IP_address:port,...
MESSAGE=arbitrary text message when EVENT=error
```

**SERVER\_LIST** is a list of all known IBM remote-support servers at the time of the last configuration retrieval.

In the following example, the storage system uses IP address 192.0.2.5 on port 9999, the Remote Support Center uses IP addresses 195.110.41.141 and 195.110.41.142 on port 443, and the logger is called to report a successful connection:

```
PATH=/bin:/sbin:/usr/bin:/usr/sbin
EVENT=connect
CLIENT=192.0.2.5:9999
SERVER=195.110.41.141:443
SERVER_LIST=195.110.41.141:443,195.110.41.142:443
MESSAGE=
```

## LogFile

(Optional) Location of the error log. If not set, the default location is /var/log/xivproxy.log.

This error log contains information about proxy service startup, shutdown, connections, and disconnections. If debugging is enabled, this file also contains the trace logs.

## DebugLog

(Optional) A flag indicating whether debugging is enabled. Set to yes to enable debugging or No to disable debugging. The default value is no.

When debugging is enabled, trace logs are created. These logs are useful for troubleshooting and debugging problems.

## ServerAddress

(Optional) IP addresses of file servers. If set, only the configured front server(s) will be used. Below is the list of IP addresses of all the available front servers:

- 195.110.41.141

- 195.110.41.142
- 129.33.206.139
- 204.146.30.139

To configure front servers, use the following format:

```
ServerAddress[N] IPAddr
ServerPort[N]PortNo (where N=1..n)
```

For example, to configure two front servers with IP addresses IP1 and IP2 over SSL, add the following to `/etc/xiv/proxy.conf`:

```
ServerAddress1 IP1
ServerPort1 443
ServerAddress2 IP2
ServerPort2 443
```

### Example

The following example shows a sample configuration file:

```
# Interface and port on which the proxy listens
ListenInterface      eth0
ListenPort           8988

# IP address settings
UseIPv4              yes
UseIPv6              yes
UseIPv6LinkLocalAddress no

# Host and port of the HTTP proxy server
HTTPProxyHost        192.0.2.3
HTTPProxyPort        8080

# User ID and password for the HTTP proxy server
HTTPProxyUser        ibm_user
HTTPProxyPassword    passw0rd

# Interface and port of status service
StatusInterface      lo
StatusPort           8966

# User ID to run the proxy
User                 nobody

# External log program (optional)
Logger               /usr/share/xiv/syslog-logger
LogFile              /var/log/xivproxy.log
DebugLog             no
```

## Starting the Remote Support Proxy service

After updating the Remote Support Proxy configuration file, start the Remote Support Proxy service.

### Procedure

To start the Remote Support Proxy service, run the following command:

```
service xivproxy start
```

If the proxy service does not start correctly, examine the log file for errors. The default log file is `/var/log/xivproxy.log`.

## Configuring storage systems

After installing and configuring the Remote Support Proxy, define a new remote support connection with information about the proxy server.

### Procedure

1. Ensure that no remote support servers are configured. To list all currently configured Remote Support Center servers, use the following command:

```
support_center_list
```

2. If Remote Support Center servers have been defined, delete the servers by using the following command:

```
support_center_delete support_center=name
```

Where *name* is the unique name of the Remote Support Center server, as it appears in the Names column in the output of the `support_center_list` command.

3. Define a new remote support connection with the information about the proxy server by using the following command:

```
support_center_define support_center=name address=proxy_ip port=proxy_port
```

where:

#### **support\_center=name**

A unique name of the remote support server. You can use any name.

#### **address=proxy\_ip**

The IP address, in IPv4 or IPv6 format, of the server on which the Remote Support Proxy is running. The value is the same as the **ListenInterface** parameter in the Remote Support Proxy configuration file (`/etc/xiv/proxy.conf`).

#### **port=proxy\_port**

The TCP port on which the Remote Support Proxy is to listen for incoming connections from the storage system (for example, 8988). The value is the same as the **ListenPort** parameter in the Remote Support Proxy configuration file (`/etc/xiv/proxy.conf`).

4. Test the connection for each storage system when configuration is complete by connecting the storage system to the remote support server by using the following command:

```
support_center_connect
```

5. Wait a few seconds for the connection to complete, and then check the status by using the following command:

```
support_center_status
```

6. Ensure that the connection state is reported as `idle` and not as `no connection`.

If the connection state is not `idle`, examine the log file for errors.

## Upgrading and configuring an existing installation

This information describes how to upgrade to a newer version of the IBM Remote Support Proxy utility on a system that has access to a storage system and the Internet.

### Before you begin

If the Remote Support Proxy service is running when you start the installation, the service is stopped when the installation completes.

## Procedure

Perform these steps to upgrade and configure the IBM Remote Support Proxy utility:

1. Download and install the Remote Support Proxy (see [“Installing the software package”](#) on page 3).

The installer recognizes the existing installation and performs an upgrade.

2. Configure the Remote Support Proxy (see [“Configuring the Remote Support Proxy service”](#) on page 4).

Review the configuration carefully to ensure that the Remote Support Proxy is correctly configured after upgrading. All configuration settings are listed in [“Configuring the Remote Support Proxy service”](#) on page 4.

3. Start the Remote Support Proxy by running the following command:

```
service xivproxy start
```

If the proxy service does not start correctly, examine the log file for errors. The default log file is `/var/log/xivproxy.log`.

## Uninstalling the Remote Support Proxy

---

This information describes how to uninstall the IBM Remote Support Proxy utility.

### Procedure

To remove the IBM Remote Support Proxy utility from the system on which it is installed, perform these steps:

1. Stop the proxy service running the following command:

```
service xivproxy stop
```

2. Uninstall the IBM Remote Support Proxy utility by running the following command:

```
rpm -e xivproxy
```





---

## Chapter 3. Management

This information describes how to start and stop the Remote Support Proxy and how to view its connection status.

---

### Starting and stopping the Remote Support Proxy service

After the IBM Remote Support Proxy utility is installed and configured, you can start, stop, and restart the Remote Support Proxy service.

#### Procedure

- To start the Remote Support Proxy, run the following command:

```
service xivproxy start
```

- To stop the Remote Support Proxy, run the following command:

```
service xivproxy stop
```

- To restart the Remote Support Proxy, run the following command:

```
service xivproxy restart
```

---

### Monitoring status

You can monitor connection status of the Remote Support Proxy.

#### Procedure

To monitor Remote Support Proxy status, run the following command:

```
service xivproxy status
```

#### Results

The status command lists the following values.

**Note:** This information is displayed only if the status service is configured in the configuration file.

#### Open connections

The number of connections that currently exist between the storage system on the network and the IBM Remote Support Center server. These connections do not have to be in an active remote support session, but only connected to the server.

#### Failed connections

The number of connections that failed due to an error. This number represent a cumulative count from the time the status service was started and can only increase. When the proxy service is stopped and restarted, this number resets to zero.

#### Total connections

The total number of connection attempts that were made by the storage system on the network, whether successful or not. This number is a cumulative count from the time the proxy service was started and can only increase. When the proxy service is stopped and restarted, this number resets to zero.

## Updating remote-support server information

---

The Remote Support Proxy periodically connects to the Remote Support Center to retrieve configuration updates, including the current IP address and port for each IBM remote-support servers.

### **About this task**

No user action is required to perform this update. This retrieval is performed automatically by the Remote Support Proxy every six hours. The connection is made by using the same method (direct connection or through an HTTP proxy) that is used to create a remote-support connection to the storage system.

The Remote Support Proxy connects directly to the Remote Support Center with no involvement from the storage system.

The configuration updates are saved to a file in the `/var/lib/xiv/proxy` directory.

## Notices

---

These legal notices pertain to the information in this IBM Storage product documentation.

This information was developed for products and services offered in the US. This material may be available from IBM in other languages. However, you may be required to own a copy of the product or product version in that language in order to access it.

IBM may not offer the products, services, or features discussed in this document in other countries. Consult your local IBM representative for information on the products and services currently available in your area. Any reference to an IBM product, program, or service is not intended to state or imply that only that IBM product, program, or service may be used. Any functionally equivalent product, program, or service that does not infringe any IBM intellectual property right may be used instead. However, it is the user's responsibility to evaluate and verify the operation of any non-IBM product, program, or service.

IBM may have patents or pending patent applications covering subject matter described in this document. The furnishing of this document does not grant you any license to these patents. You can send license inquiries, in writing, to:

*IBM Director of Licensing  
IBM Corporation  
North Castle Drive, MD-NC119  
Armonk, NY 10504-1785  
USA*

For license inquiries regarding double-byte character set (DBCS) information, contact the IBM Intellectual Property Department in your country or send inquiries, in writing, to:

*Intellectual Property Licensing  
Legal and Intellectual Property Law  
IBM Japan Ltd.  
19-21, Nihonbashi-Hakozakicho, Chuo-ku  
Tokyo 103-8510, Japan*

INTERNATIONAL BUSINESS MACHINES CORPORATION PROVIDES THIS PUBLICATION "AS IS" WITHOUT WARRANTY OF ANY KIND, EITHER EXPRESS OR IMPLIED, INCLUDING, BUT NOT LIMITED TO, THE IMPLIED WARRANTIES OF NON-INFRINGEMENT, MERCHANTABILITY OR FITNESS FOR A PARTICULAR PURPOSE. Some states do not allow disclaimer of express or implied warranties in certain transactions, therefore, this statement may not apply to you.

This information could include technical inaccuracies or typographical errors. Changes are periodically made to the information herein; these changes will be incorporated in new editions of the publication. IBM may make improvements and/or changes in the product(s) and/or the program(s) described in this publication at any time without notice.

Any references in this information to non-IBM Web sites are provided for convenience only and do not in any manner serve as an endorsement of those Web sites. The materials at those Web sites are not part of the materials for this IBM product and use of those Web sites is at your own risk.

IBM may use or distribute any of the information you supply in any way it believes appropriate without incurring any obligation to you.

Licensees of this program who wish to have information about it for the purpose of enabling: (i) the exchange of information between independently created programs and other programs (including this one) and (ii) the mutual use of the information which has been exchanged, should contact:

*IBM Director of Licensing  
IBM Corporation  
North Castle Drive, MD-NC119*

Armonk, NY 10504-1785  
USA

Such information may be available, subject to appropriate terms and conditions, including in some cases, payment of a fee.

The licensed program described in this document and all licensed material available for it are provided by IBM under terms of the IBM Customer Agreement, IBM International Program License Agreement or any equivalent agreement between us.

The performance data discussed herein is presented as derived under specific operating conditions. Actual results may vary.

Information concerning non-IBM products was obtained from the suppliers of those products, their published announcements or other publicly available sources. IBM has not tested those products and cannot confirm the accuracy of performance, compatibility or any other claims related to non-IBM products. Questions on the capabilities of non-IBM products should be addressed to the suppliers of those products.

All statements regarding IBM's future direction or intent are subject to change or withdrawal without notice, and represent goals and objectives only.

## Trademarks

---

These legal notices pertain to the information in this IBM product documentation.

IBM, the IBM logo, and ibm.com are trademarks or registered trademarks of International Business Machines Corp., registered in many jurisdictions worldwide. Other product and service names might be trademarks of IBM or other companies. A current list of IBM trademarks is available on the [Copyright and trademark information website](http://www.ibm.com/legal/us/en/copytrade.shtml) ([www.ibm.com/legal/us/en/copytrade.shtml](http://www.ibm.com/legal/us/en/copytrade.shtml)).

Linux is a trademark of Linus Torvalds in the United States, other countries, or both.

Other company, product, and service names may be trademarks or service marks of others.





Printed in USA

GA32-0795-07

